

DUNES ACCESS STORYBOARD

The Fylde Sand Dunes Project's 'Coastal Access and Interpretation' strategy will create 11 new obvious access routes through the Fylde sand dunes to the beach along with accompanying interpretation. The new access points and interpretation will be placed at various points along the Fylde coast and will be within the 79 hectare project area from Squires Gate (in Blackpool) to the mouth of the Ribble Estuary (Lytham). The coastal access and interpretation strategy will be split into 6 defined zones.



DUNES ACCESS STORYBOARD

Access

11 new access points created

Wooden posts and rope used at each entrance point:

- **Posts** — 250 x softwood posts —2.1m / 150mm, planed, including 50mm diameter pre-drilled hole
- **Rope**— 500m of Manila (40mm diameter) rope



Access points will create 1198.86 metres of new or improved public footpaths

Waymarkers -

20 x waymarkers (Includes routed numbers/colour ring and a wildlife image on one face of each post)



Finger posts (one finger) -

18 x Finger posts in total:

- 4 x beach (double-sided) text,
- 6 x dunes (double-sided) text,
- 7 x road (double-sided) text,
- 1 x Nature Reserve (double-sided) text



Interpretation

6 new interpretation boards designed, created and installed

Interpretation boards –

6 x A0, wooden oak lectern-style frame with snap panels for changeable information



The content for each interpretation board will have a slightly different focus.

Interpretation boards will be placed in the following locations (North > South):

Interpretation board 1: On the second access point opposite the new Persimmon Homes 'Coastal Dunes' housing development

Interpretation board 2: On the Local Nature Reserve

Interpretation board 3: On North Promenade car park

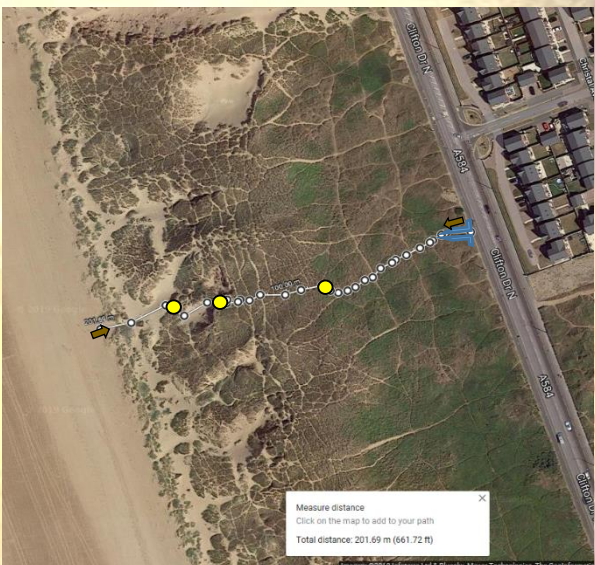
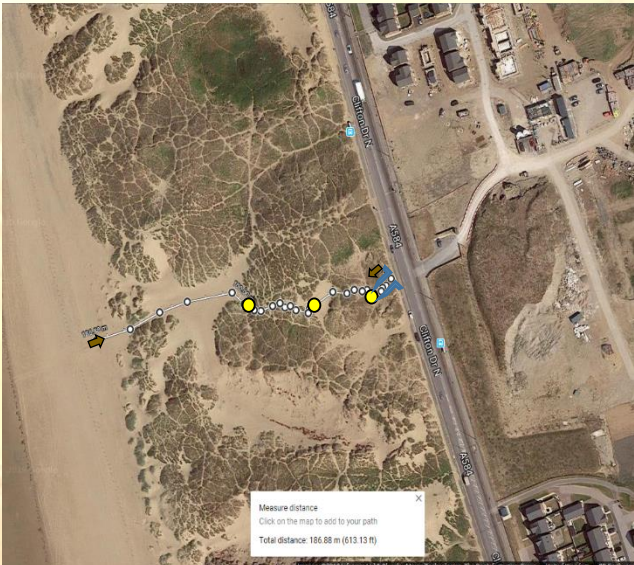
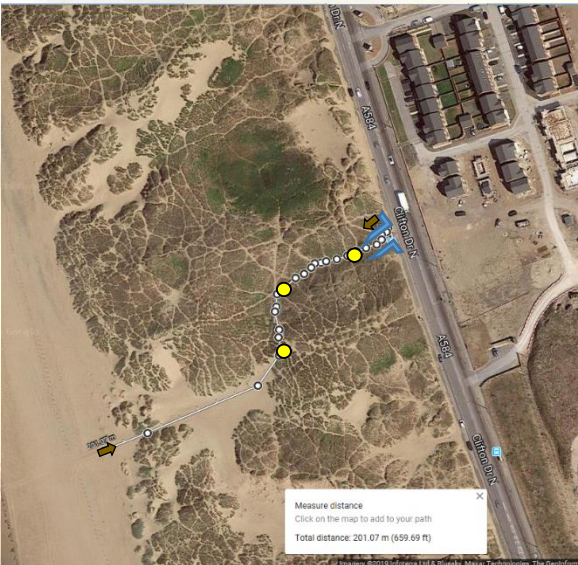
Interpretation board 4: Beach access at Beach Terrace (Fairhaven Rd Car Park)

Interpretation board 5: Granny's Bay

Interpretation board 6: On Lytham Promenade

Maps

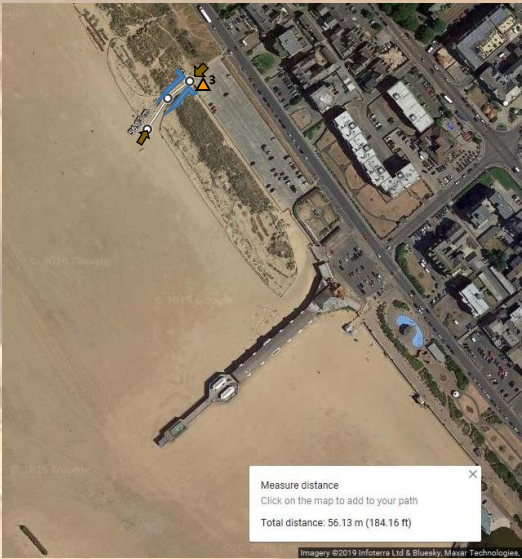
Zone 1: Dunes Opposite Persimmon including the Local Nature Reserve (LNR)



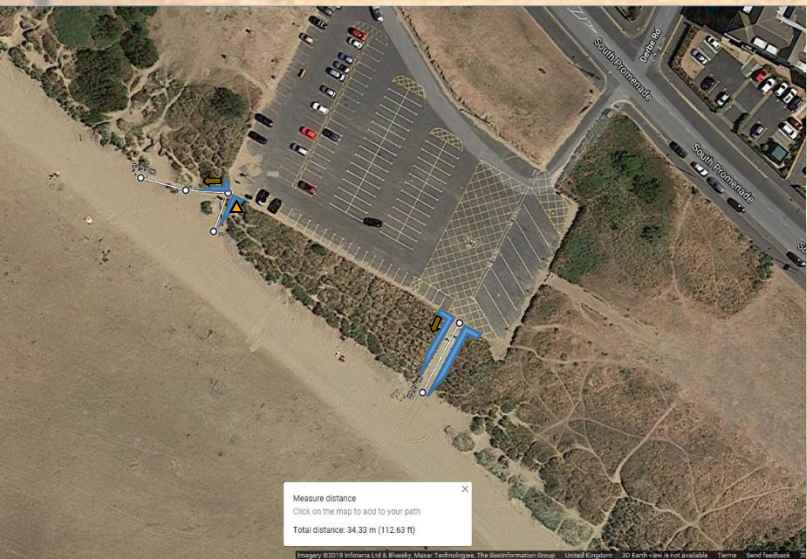
Zone 2: North Beach



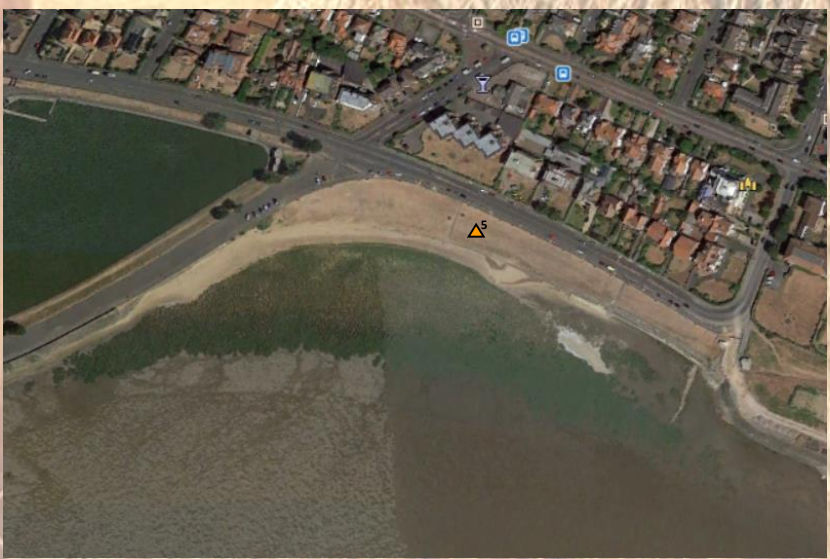
Zone 3: North Promenade Car Park



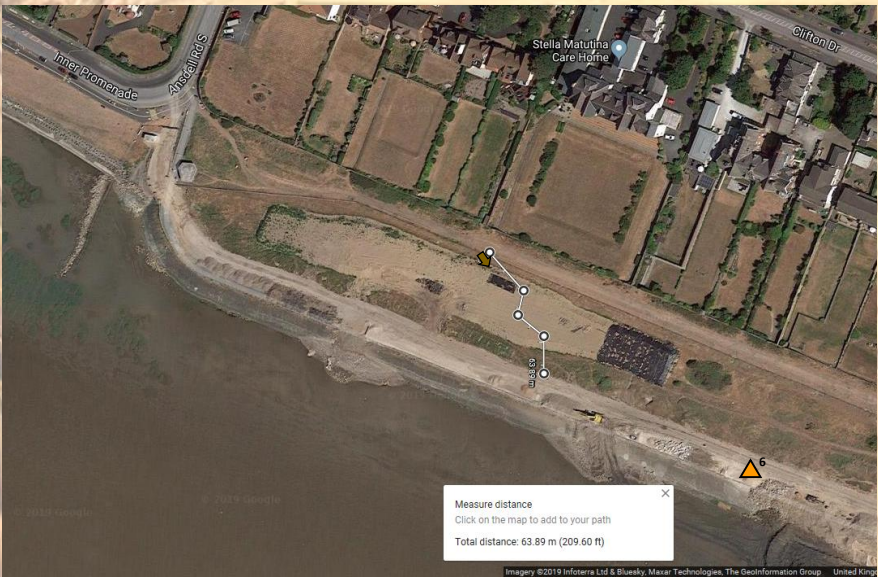
Zone 4: Beach Terrace (Fairhaven Rd Car Park)








Zone 5: Granny's Bay



Zone 6: Church Scar/Lytham Promenade



Key

-  = Post and rope fence entrance point
-  = Finger post (Directional—Beach/Dunes/Road/Nature Reserve)
-  = Interpretation board
-  = Distance measurement
-  = Waymarker