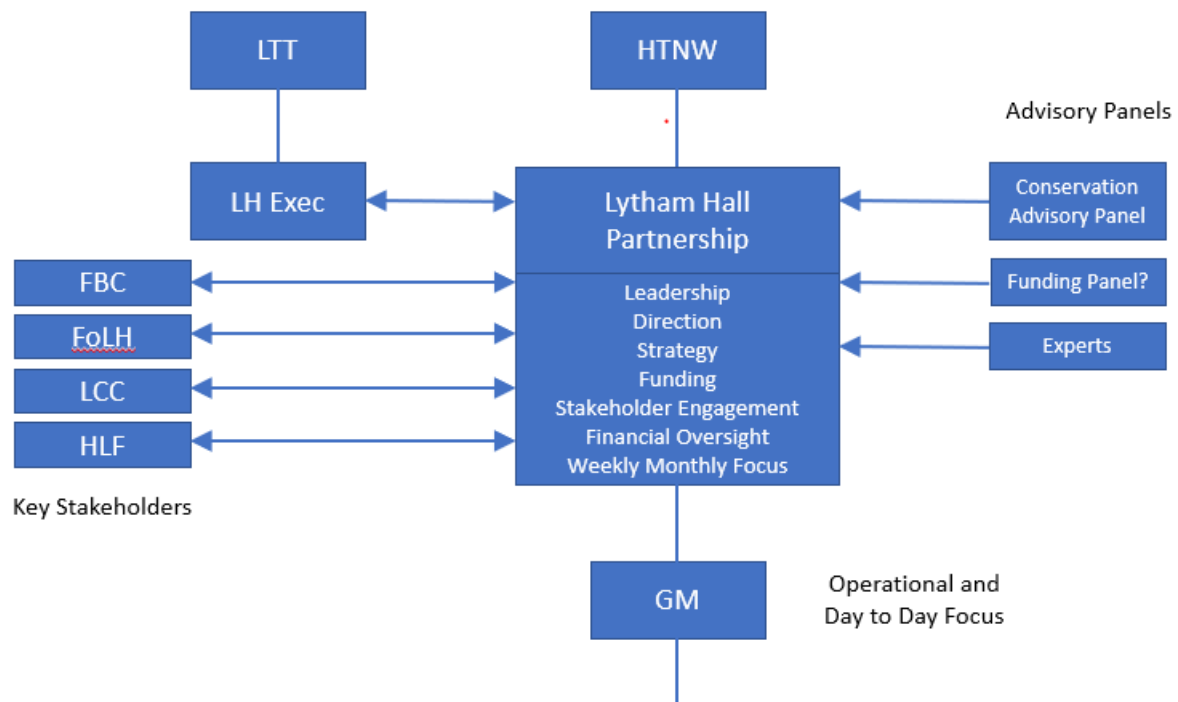


Appendix 1: Lytham Hall Partnership (LHP)

The Partnership Structure



LHP will be responsible for the overall strategic leadership and direction of Lytham Hall projects and will:

- Provide direction, leadership and support
- Have full financial oversight of all projects
- Project manage funding bids for Lytham Hall

What is LHP?

- LHP scope is wider than that of the Lytham Hall Executive (the tenant / landlord body that manages the lease for the Hall) and will have stronger closer working relationship / partnership with a local / Lytham focus and delegated authority
- It will provide visual leadership on the ground
- It would fill the current void at Lytham Hall of director level leadership
- LHP will meet with LH Executive to fulfil the terms of the lease and develop productive relationships
- Accounts for LH will be available within 4 weeks of end of quarter and monitored by LHP
- Membership of LHP will be open and transparent
- Members will require a 'can do' attitude with no historical alliances / agendas or baggage, good relationship building skills and passionate about Lytham Hall
- New members will be mutually agreed
- The Management Team at the Hall will continue to be fully responsible for operational and day to day decision making, staff and volunteer coordination etc.

LHP Members

The members of LHP, all of which are volunteer roles, include:

- John Turner HTNW (Chairman)
- Laurie Peake HTNW

- FBC Representative (to be nominated)
- Steve Williams LTT (Project Co-ordinator)
- Pam Greenhill second LTT Representative
- Additional members as determined by the partnership

Focus of LHP

- Strategic direction and leadership
- Management support and advice
- Strategy and business planning
- Full financial oversight
- Relationship and partnership management
- Stakeholder engagement
- Funding Strategy
- Marketing Strategy
- Bid project coordination
- Recruitment advice and support
- Key decision making via
 - Management Team
 - Conservation advisory panel
 - Volunteer Team Leader Panel
 - Other panels and experts

LHP Key Tasks

- Define Vision and Mission
- Define Governance, Codes and Policies
- Define Strategy in consultation with stakeholders
- Develop the Business Plan
- Co-ordination and timing of project plans
- Prioritise projects in accordance with strategy, conservation and funding
- Define goals, objectives and key performance measures
- Cascade projects through the Management Team
- Coordinate with Advisory Panels
- Coordinate with Volunteer Team Leaders through Management Team
- Engagement with key stakeholders including LTT, FoLH, FBC, etc.
- Oversee financial accounts
- Define partnership agreements