


The logo consists of two overlapping yellow circles. The word "SPOT" is written in black, bold, sans-serif capital letters in the left circle, and the word "ON" is written in black, bold, sans-serif capital letters in the right circle.

SPOT ON

RURAL TOURING

A group of dancers in red and white costumes performing a synchronized dance move on a dark stage. The dancers are in a line, with their arms raised and bodies arched, creating a dynamic and visually striking scene.

Lancashire's Rural Touring Network  
Spring 2016 Tour

Professional arts events  
on your doorstep







## Welcome to Spot On's Spring 2016 tour

### RURAL TOURING

### After celebrating 20 years of delivering great art to rural communities in 2015, we have come of age.

This season our network of community promoters have chosen work which challenges, provokes, and entertains.

We welcome artists from the USA and Canada. We have work engaging with contemporary themes and children's shows which educate and entertain. We have exciting physical theatre and a range of incredibly lively musicians. There should be something for everyone in here.

All of our events are made possible by our volunteers across the county. Our promoters work so hard because they love live arts events. In turn they provide work for professional companies and support their local economy.

This great art is possible due to continued public investment in the arts via Arts Council England, Lancashire County Council and local district authorities.

Please visit our website for more details about the shows, tourist information, directions and venue details. If you value the arts in your community and want to help us be around for another 20 years, or you're a fan of Spot On, please tell us.

Below there are six different ways to do this.

If your venue is not yet on our map, call **Spot On 01254 660360** to find out how you can host a show.

Call us too if you want future brochures sent directly to your door or want to join our email list.

**Sue Robinson**  
Scheme Manager

**Spot On, Lancashire's Rural Touring Network**  
c/o The Barn, 61A Manor Road,  
Blackburn, BB2 6LX  
Telephone: **01254 660360**

Email: [hello@spotonlancashire.co.uk](mailto:hello@spotonlancashire.co.uk)  
Web: [www.spotonlancashire.co.uk](http://www.spotonlancashire.co.uk)  
Facebook: [www.facebook.com/spotonlancashire](https://www.facebook.com/spotonlancashire)  
Twitter: [@spotonlancs](https://twitter.com/spotonlancs)



The network is coordinated by Culturapedia as part of the Cheshire Lancashire Touring Partnership.

## Contents

Children	2
Family	3-4
Theatre	5-8
Music	9-10
Dance	11
Spoken Word	11
Live Screening	12
At a Glance	13-14
Map	15

Front cover image:  
Sampad presents  
Tribhangi Dance Theatre  
Sukuma



## Little Angel Theatre Handa's Hen

When Handa and her friend Akeyo go looking for Grandma's black hen Mondi, they find two fluttery butterflies round the hen house, three stripy mice under the grain store, four little lizards behind the pots... But where is Mondi?

Based on the book by Eileen Browne, this beautiful and engaging show features 55 stunning puppets all created by hand. Join in with Handa and Akeyo as they sing and dance in search of Mondi, meeting a host of colourful animals and birds as they go.

**Wednesday 6th April – 11am, 2pm & 4pm**

Bacup Library

**Thursday 7th April – 11am & 2pm**

Ormskirk Library

Suitable for ages 2-6

Running time 35 minutes

[www.littleangeltheatre.com](http://www.littleangeltheatre.com)



## Theatre Fidera Fideri Pitschi, The Kitten With Dreams



Little Swiss kitten Pitschi lives with her brothers and sisters, Grandma Lisette and Bello the dog on a farm high up in the Swiss Alps. She doesn't like the rough and tumble and mischievous fun of kitten play and dreams of being something else. Pitschi would rather be any other animal in the world – a chicken, a goat, a duck ...anything, as long as it isn't a cat! She goes off on an exciting adventure around the farm to meet the other animals; but with winter approaching, will she find her way home before the first snow falls?

**Come and enjoy this touching tale full of good humour, adventure, live music and song.**

**Wednesday 13th April – 2pm & 4pm**

Heysham Library

**Thursday 14th April – 11am & 2pm**

The Harris Library, Preston

Suitable for ages 2-7

Running time 45 minutes

[www.theatre-fideri-fidera.com](http://www.theatre-fideri-fidera.com)

children



This show is subsidised by Big Imaginations, 'Bringing Brilliant Children's Theatre to the North West': [www.bigimagination.co.uk](http://www.bigimagination.co.uk)





## Circus Berzercus

### A Mismatch Made In Devon

**A hilarious, highly-skilled circus show for all of the family.**

Ladies and gentlemen... we are proud to present the Great Phil-dini, champion juggler, master of manipulation and dexterity, a legend of the circus world. Unfortunately, we must also announce that he will be accompanied by his hapless stage-hand Horace, whose eagerness to entertain outshines his talent.

The Great Phil-dini has performed his spectacular solo show in the grandest of venues all over the world, from Venice to Vegas, whilst Horace has carried his bags. After much badgering he has reluctantly agreed to allow Horace some of the limelight. Horace's circus skills are somewhat limited so it will take all of Phil-dini's talent and patience to train him up ready for the big show.

**Expect spectacularly high unicycling, breath-taking ladder balancing, juggling and a touch of magic, all interwoven with physical comedy and mayhem.**

**Thursday 25th February – 4.30pm**

Burnley Library



**Friday 26th February – 6.45pm**

Tockholes Village Hall

Suitable for ages 5+

Running time 1½ hours plus an interval

[www.circusberzercus.co.uk](http://www.circusberzercus.co.uk)



# family



## Up The Road Theatre and Unity Theatre, Liverpool present: Bardolph's Box

**Name:** Bardolph

**Age:** I forget...

**Favourite things:** Being cheeky. Having fun.

**Meeting new people. Helping others.**

Join cheeky chappy Bardolph on his rollercoaster ride through Shakespeare's stories.

Everyone needs a helping hand at times and Bardolph is just the boy for the job! Who will we meet? Where will we go? Can you get my pals out of a pickle? One thing's for sure, we'll have a whole lot of fun along the way!

**Saturday 2nd April – 2pm**

Lancaster library

Suitable for ages 8+

Running time 45 minutes

[www.unitytheatreliverpool.co.uk](http://www.unitytheatreliverpool.co.uk)



This show is subsidised by Big Imaginations, 'Bringing Brilliant Children's Theatre to the North West': [www.bigimagination.co.uk](http://www.bigimagination.co.uk)

## 154 Collective The Adventures of Walter Lemonface

A fun-filled, interactive experience for the whole family. Join adventurer, fearless inventor and connoisseur of carrots, Walter Lemonface as he hunts for Rhubarb Ogres, battles ghosts and finds a new adventure around every corner.

Spot On is hosting a series of 20-minute stories happening in 154's pop up animation tent to accompany the full-length show at Burnley Arts Centre on Friday 3rd June.

**Check out our website for information on the 20 Minute Pop Ups**

**Full show**

**Friday 3rd June – Time TBC**

Burnley Arts Centre

Suitable for ages 3+

[www.154collective.co.uk](http://www.154collective.co.uk)





## Aizzah Fatima

### Dirty Pakistani Lingerie

**Sex, politics and religion collide in this remarkable show direct from New York.**

Set in post-9/11 America, it depicts the stories of six Pakistani-American Muslim women ranging in age from six to 65 years.

Cross-cultural sparks fly and preconceptions are hilariously shattered in a show that has played to packed-out houses in America, London, Edinburgh, Toronto – and even toured to three cities in Pakistan. It was the first show to represent America at the International Theater Festival of Turkmenistan.

**This is a rare opportunity to see a truly international piece of theatre that cuts to the heart of modern life.**

**Wednesday 24th February – 7.30pm**

The Lowther Pavilion, Lytham

**Friday 8th April – 7pm**

The Rainhall Centre, Barnoldswick

Suitable for ages 14+



## Box of Tricks

### Chip Shop Chips

It's the grand reopening of Booth's Fish & Chip Shop. Eric has returned home, over forty years after he left, and it's time for a fresh start. But old flame Christine has other ideas. Transported back to a time of chippy teas and Northern Soul, there's unfinished business for these old lovers.

Watching teenage love stumble as hapless Lee makes a pass at the beautiful Jasmine, is it all just history repeating itself?

Focusing on love at different ages and celebrating the nation's favourite food, Chip Shop Chips is an immersive love story set in a chippy performing in unusual spaces across the North West. Put on your dancing shoes, tuck into a fish supper and brace yourself for a unique theatrical experience. This is theatre, but not as you know it: dinner, dance and a show all rolled into one!

**Friday 18th March – 7.30pm**

Calder Vale Village Hall

**Saturday 19th March – 7.30pm**

Lowther Pavilion at

Hewitt Lecture Room, Lytham

**Sunday 20th March – 7pm**

St Joseph's Parish Hall, Hoghton

Suitable for ages 15+

[www.boxoftrickstheatre.co.uk](http://www.boxoftrickstheatre.co.uk)





## Pentabus Theatre Company and Salisbury Playhouse present

This Land  
by Siân Owen

### How far down do you own the land you stand on?

Bea and Joseph are re-kindling their love. But, with the arrival of a fracking company ready to dig, the village where they live is falling apart. Through the lives of a young couple, This Land tells a story of community, belonging and the ground beneath our feet. What does the place where you live mean to you? What happens when someone else comes along and stakes their claim? Be taken on a theatrical journey through an ever-changing landscape with this new play.



Friday 1st April – 7.30pm (Doors open 7pm)

Bleasdale Parish Hall

Saturday 2nd April – 7.30pm (Doors open 7pm)

The Bureau, Blackburn

Suitable for ages 12+

[www.pentabus.co.uk](http://www.pentabus.co.uk)

## Proteus Theatre Becoming Hattie

**Thoughtful, funny, warm and nostalgic, this one-woman show is an affectionate look at the life and career of Hattie Jacques and a witty, caustic look at modern life in show business and its cultural attitudes toward larger women.**

It's 1974 and 8-year-old Jo is idly watching the telly when 'Sykes' comes on. There, on the screen, is a woman unlike anyone else - that woman is Hattie Jacques!

Forty years on and Jo has followed in Hattie's footsteps; she too is an actress. But why is she cast as the nurse, never the surgeon? And why is she too fat to play Lady Macbeth..?

Wednesday 4th May – 7.30pm

Arkholme Village Hall

Thursday 5th May – 7.30pm

Aughton Village Hall

Suitable for ages 15+

[www.proteustheatre.com](http://www.proteustheatre.com)



# theatre



# theatre



## Animikii Origins

**'Origins' is the untold story of the world's first murderer.**

After murdering his brother, in cold blood, we meet Cain living out his life exiled from his homeland.

Afflicted by his memories and haunted by figures from the past, Cain must now retrace his steps back to Eden in pursuit of answers.

Origins is a psychological thriller that plunges into the heart of darkness where movement, sound and rhythm fuse to create a physically pulsating stage adventure. Journey into the landscapes of both dream and reality and confront life's most primeval questions of faith, death and immortality.

**Friday 6th May - 7pm**

The Rainhall Centre, Barnoldswick

**Saturday 7th May - Time TBC**

Venue TBC

Suitable for ages 14+

[www.animikiitheatre.com](http://www.animikiitheatre.com)



**THE LOWRY**  
ART & ENTERTAINMENT

### Developed With The Lowry

Animikii's show has been produced as part of the 'Developed with The Lowry' programme. This programme invests in new work from developing writers, artists and companies. Those chosen benefit from a package of support to help them develop a brand new show. This is the second show supported by a new partnership between The Lowry and Cheshire & Lancashire Rural Touring partnership.



## Peter Macqueen

### The Professor of Adventure

**A meeting with the 'Caveman of Borrowdale' – a one-man-play based on the life and times of Millican Dalton (1867-1947).**

It's 1941 and Millican is in 'the safest spot to escape the kind attentions of Mr Hitler' - his cave in Borrowdale. But the Keswick ARP warden has just ordered him to "put that candle out" and the Borrowdale Hermit is far from happy...

He smelt like a mountain goat, chain-smoked Woodbines and lived in a cave. Millican Dalton was a mountain guide, philosopher and self-proclaimed inventor of shorts. Leaving his stifling city job, Millican dropped out before it became fashionable and set out to seek romance and freedom, living amongst nature in cabins, tents and caves for the next fifty years of his life.

Meet this true English eccentric – the self-styled Professor of Adventure – in this one-man-show celebrating his unique outlook on life and his philosophy of happiness and fulfilment.

**Thursday 19th May – 8pm**

Halton Mill

**Friday 20th May – 7.30pm (Doors open at 7pm)**

Simonstone Parish Hall

**Saturday 21st May – 7.30pm**

Euxton Parish Church Community Centre

Suitable for ages 12+



## Rebecca Perry

### Confessions of a Red Headed Coffee Shop Girl

**Meet Joanie Little: feisty redhead, recent anthropology graduate, ready to take on the world!** But... she's stuck working as a barista.

Determined to use her vocational skills, Joanie turns her local cafe upside down, reporting on the "creatures" (customers) as if she were Jane Goodall herself, bushwhacking through the jungle to study chimpanzees! In her very own "Coffee Shop Jungle", hilarity ensues, with jazzy tunes, co-worker showdowns, and... maybe even a little bit of romance!

As seen on TV (taped live for Bell Canada) & awarded Best Musical (2014) by BroadwayWorld.

**Friday 27th May – 7pm**

St Joseph's Parish Hall, Hoghton

Suitable for ages 14+

[www.redheadedcsg.com](http://www.redheadedcsg.com)





## The Baghdaddies



Touring the world for 14 years, the Baghdaddies' music is world music with strong Balkan tendencies alongside Caribbean grooves, Middle Eastern rhythms and even some Geordie [native Newcastle] touches, all awash with influences such as ska, jazz, punk and metal, delivered with theatre and exuberance.

**Uplifting and infectiously danceable, full of blistering brass, rousing 5 part vocal harmonies and a rhythm section that you can't keep still to. Songs to listen to and party!**

**Thursday 10th March – 7pm**

Clayton Green Library



**Friday 11th March – 7.30pm**

Tosside Community Hall

**Sunday 13th March – 7.30pm**

Arkholme Village Hall

Suitable for ages 5+

[www.baghdaddies.com](http://www.baghdaddies.com)

## Anna Mudeka Band Dendende

The Anna Mudeka Band is a six piece band playing a fusion of music driven from the mbira music of Zimbabwe. Their sound is simply known as sunshine music by their followers. Refreshing and original, the band, led by Anna Mudeka - singer, dancer and mbira player - is rocky, funky, reggae and African all at the same time.

The band is rocky, funky, reggae and African all at the same time. Anna is lead vocalist and Glynnis offers powerful harmonies with wild dance moves which sends their audience into a crazy dance frenzy wherever they perform. This, matched with the lead guitar's riffs, a six string bass played with attitude and a driving drum beat with Cuban-influenced congas makes this band a must-see on the world music scene.

**Friday 8th April – 7pm**

Tockholes Village Hall

**Saturday 9th April –**

**Time TBC**

Melling Village Institute

Suitable for ages 5+

[www.annamudeka.com](http://www.annamudeka.com)



# music



## Woody Holler and his Orchestra



Woody Holler and his Orchestra are purveyors of "western swing" music. Woody grew up hearing the songs of the cowboy. Although he was later trained in opera, a sense of nostalgia held him close to the early western genre.

Consisting of some of Canada's finest folk/jazz musicians, Woody's orchestra creates a style that Woody defines as "jazz from the saddle". The repertoire is eclectic, fun and fascinating, featuring finger-snapping swing beats, honey-slowed love croons and show-stopping "extreme" yodelling.

**Sunday 17th April – 7.30pm**  
Mellor Brook Community Centre

**Saturday 23rd April – 7.30pm**  
Scorton Village Hall

Suitable for ages 18+  
[www.woodyholler.ca](http://www.woodyholler.ca)



## Bob Fox Songs From WarHorse



When the National Theatre adapted the novel by Michael Morpurgo, they created a multi-award winning smash hit stage play and the character of Song Man was born. Bob Fox has played this role for over three years in both the West End and the record-breaking national and international touring version.

Having been totally immersed in the stage production, Bob has developed a unique concert performance of all of the songs created especially for the play by John Tams, interspersed with snippets of the story from Bob's own perspective.

This is a wonderful opportunity to see one of the finest exponents of storytelling through music, as he performs the songs of WarHorse and other related material.

**Thursday 5th May – 7.30pm**

The Boo, Rawtenstall

**Friday 6th May – 8pm**

Grindleton Pavilion

**Sunday 8th May – 7.30pm**

(Doors open 7pm)

Croston Old School

Suitable for ages 14+

[www.bobfoxmusic.com](http://www.bobfoxmusic.com)





## Sampad presents Tribhangi Dance Theatre Sukuma



**An exhilarating dance experience that can be enjoyed by people of all ages.**

Sukuma means 'stand up' in Swahili, and that's exactly what the audience will be doing when they witness Tribhangi Dance Theatre, an award-winning dance company based in Johannesburg, South Africa. Their striking, high-energy performances reflect their colourful African, contemporary, Afro-fusion and Bharatanatyam (South Indian) dance styles.

The company combine the grace of Indian classical Bharatanatyam with the strong physicality of African dance that come together with a contemporary flair.

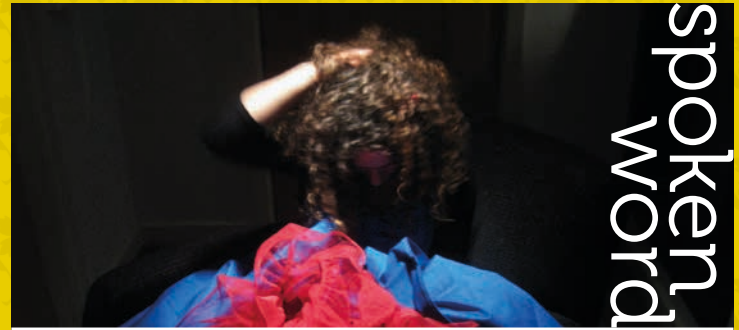
**"These are talking feet, talking drums, talking souls. Beautiful South African bodies steeped in different cultural heritages and rhythms converge"** Adrienne Sichel: Dance Critic

**Thursday 12th May – 7.30pm**  
The Lowther Pavilion, Lytham

Suitable for ages 8+  
[www.tribhangi.co.za](http://www.tribhangi.co.za)



## Debs Newbold Lost In Blue



**Performer, word wrangler, crowd-tamer:**

Debs Newbold's powerful storytelling brings together the poetic and the irreverent, the epic and the everyday, the ancient and the defiantly modern. Debs is one of the UK's fastest rising performance storytellers, regularly playing venues such as the Royal Opera House, the British Library, the Southbank Centre, the RSC and Shakespeare's Globe as well as many prestigious festivals and friendly intimate spaces in both the UK and abroad.

With a quick wit, eloquent physicality and a bewitching way with an audience, Debs' work has been hailed as "masterful verbal cinema". Her latest show, *Lost in Blue* is a wonderfully bizarre one-woman show.

When she was three years old, Annie's life was skewed off-course. On her 18th birthday, it threatens to happen again.

What is it like to be in a coma? To love someone in a coma? What would Van Gogh say about it if you hung out with him in his room at Arles? And what does a pigeon called Muhammad Ali eat for breakfast?

**Friday 11th March – 7.30pm (Doors open at 7pm)**  
Fraser Hall, Cowan Bridge

**Saturday 12th March – 3pm**  
Ingol Library

Suitable for ages 15+  
[www.debsnewbold.com](http://www.debsnewbold.com)





# Front Row Screenings at Parbold Picture House

Visit [www.parboldpicturehouse.org](http://www.parboldpicturehouse.org) for more information.

See the world-class music programme at [www.parbolddouglasmusic.org](http://www.parbolddouglasmusic.org)



## National Theatre Live

### As You Like It

**Shakespeare's glorious comedy of love and change comes to the National Theatre for the first time in over 30 years, with Rosalie Craig (London Road, Macbeth at MIF) as Rosalind.**

With her father the Duke banished and in exile, Rosalind and her cousin Celia leave their lives in the court behind them and journey into the Forest of Arden.

There, released from convention, Rosalind experiences the liberating rush of transformation. Disguising herself as a boy, she embraces a different way of living and falls spectacularly in love.

**Thursday 25th February – 7pm**

**Parbold Village Hall**

Suitable for ages 12+

More shows to be announced soon

# live screening



# SPOT ON

## RURAL TOURING



### Access

Spot On is working to ensure that events are accessible to all. To ensure your night out with the network is an enjoyable one, please feel free to discuss access needs with either the venue or the Scheme Manager.

For more information please contact:

**Sue Robinson**  
Scheme Manager

**Lyndsey Wilson**  
Company Manager

Spot On Telephone:  
**01254 660360**

Email:  
**hello@spotonlancashire.co.uk**

Website:  
**www.spotonlancashire.co.uk**

✓ Date	Time	Who	What
Wed 24th Feb	7.30pm	Aizzah Fatima	Dirty Pakistani Lingerie
Thurs 25th Feb	4.30pm	Circus Berzercus	A Mismatch Made In Devon
Thurs 25th Feb	7pm	NTLive	As You Like It
Fri 26th Feb	6.45pm	Circus Berzercus	A Mismatch Made In Devon
Thurs 10th Mar	7pm	The Baghdaddies	
Fri 11th Mar	7.30pm (7pm)	Debs Newbold	Lost in Blue
Fri 11th Mar	7.30pm	The Baghdaddies	
Sat 12th Mar	3pm	Debs Newbold	Lost in Blue
Sun 13th Mar	7.30pm	The Baghdaddies	
Fri 18th Mar	7.30pm	Box of Tricks	Chip Shop Chips
Sat 19th Mar	7.30pm	Box of Tricks	Chip Shop Chips
Sun 20th Mar	7pm	Box of Tricks	Chip Shop Chips
Fri 1st Apr	7.30pm (7pm)	Pentabus	This Land
Sat 2nd Apr	2pm	Up The Road Theatre & Unity Theatre	Bardolph's Box
Sat 2nd Apr	7.30pm (7pm)	Pentabus	This Land
Wed 6th Apr	11am, 2 & 4pm	Little Angel Theatre	Handa's Hen
Thurs 7th Apr	11am & 2pm	Little Angel Theatre	Handa's Hen
Fri 8th Apr	7pm	Aizzah Fatima	Dirty Pakistani Lingerie
Fri 8th Apr	7pm	Anna Mudeka	Dendende
Sat 9th Apr	TBC	Anna Mudeka	Dendende
Wed 13th Apr	2pm & 4pm	Theare Fideri Fidera	Pitschi The Kitten With Dreams
Thurs 14th Apr	11am & 2pm	Theare Fideri Fidera	Pitschi The Kitten With Dreams
Sun 17th Apr	7.30pm	Woody Holler and his Orchestra	
Sat 23rd Apr	7.30pm	Woody Holler and his Orchestra	
Wed 4th May	7.30pm	Proteus Theatre Company	Becoming Hattie
Thurs 5th May	7.30pm	Bob Fox	Songs from WarHorse
Thurs 5th May	7.30pm	Proteus Theatre Company	Becoming Hattie
Fri 6th May	7pm	Animikii	Origins
Fri 6th May	8pm	Bob Fox	Songs from WarHorse
Thurs 12th May	7.30pm	Sampad presents Tribhangi Dance Theatre	Sukuma
Thurs 19th May	8pm	Peter Macqueen	The Professor of Adventure
Fri 20th May	7.30pm (7pm)	Peter Macqueen	The Professor of Adventure
Sat 21st May	7.30pm	Peter Macqueen	The Professor of Adventure
Sun 22nd May	7.30pm (7pm)	Bob Fox	Songs from WarHorse
Fri 27th May	7pm	Rebecca Perry	Confessions of a Red Headed Coffee Shop Girl

Use these boxes to mark your favourites!



## Performances at a Glance : SPRING 2016 TOUR

- Children | • Family | • Theatre | • Dance |
- Music | • Spoken Word | • Live Screening |

PLEASE CALL THE BOX OFFICE PHONE NUMBER FOR LOCAL INFORMATION AND TO BOOK TICKETS  
[WWW.SPOTONLANCASHIRE.CO.UK](http://WWW.SPOTONLANCASHIRE.CO.UK) FOR MORE INFORMATION

Information correct at time of print.  
 Please check final details with local venue before setting off on your journey.

Where	Postcode	For ticket bookings	
Lowther Pavilion, Lytham	FY8 5QQ	01253 794221	•
Burnley Library	BB11 2BD	0300 1236703	•
Parbold Village Hall	WN8 7DN	01257 463878	•
Tockholes Village Hall	BB3 0LR	07889 105969	•
Clayton Green Library	PR6 7EU	0300 1236703	•
Fraser Hall, Cowan Bridge	LA6 2HS	07738 291734	•
Tosside Community Hall	BD23 4SQ	01729 840272	•
Ingol Library	PR2 3YX	0300 1236703	•
Arkholme Village Hall	LA6 1AU	07519 281305	•
Calder Vale Village Hall	PR3 1SJ	01995 603838 / 01995 602615 / 01995 606278	•
Hewitt Lecture Room, Lytham	FY8 5HQ	01253 794221	•
St Joseph's Parish Hall, Hoghton	PR5 0DE	07795 322761	•
Bleasdale Parish Hall	PR3 1UY	01995 606511 / 01995 643499	•
Lancaster Library	LA1 1HY	0300 1236703	•
The Bureau, Blackburn	BB1 6DW	07845 964802	•
Bacup Library	OL13 9AH	0300 1236703	•
Ormskirk Library	L39 2EN	0300 1236703	•
The Rainhall Centre, Barnoldswick	BB18 5DR	01282 345200	•
Tockholes Village Hall	BB3 0LR	07889 105969	•
Melling Village Institute	LA6 2RA	01254 660360	•
Heysham Library	LA3 2BJ	0300 1236703	•
The Harris Library, Preston	PR1 1AH	0300 1236703	•
Mellor Brook Community Centre	BB2 7PR	07791 558554	•
Scorton Village Hall	PR3 1AS	07714 486581	•
Arkholme Village Hall	LA6 1AU	07519 281305	•
The Boo, Rawtenstall	BB4 7HB	01706 220241	•
Aughton Village Hall	L39 5DH	01695 422423	•
The Rainhall Centre, Barnoldswick	BB18 5DR	01282 345200	•
Grindleton Pavilion	BB7 4QS	01200 441113 / 07765 240405	•
Lowther Pavilion, Lytham	FY8 5QQ	01253 794221	•
Halton Mill	LA2 6ND	01254 289295 / 07890 728094	•
Simonstone Parish Hall	BB7 2PB	01200 428742 / 01282 777891	•
Euxton Parish Church Community Centre	PR7 6JL	01257 271265 / 07712 671945	•
Croston Old School	PR26 9HA	01772 603600 / 01772 600142	•
St Joseph's Parish Hall, Hoghton	PR5 0DE	07971 753251	•

PLEASE CALL THE TICKET BOOKINGS PHONE NUMBER FOR LOCAL INFORMATION AND TO BOOK TICKETS





RURAL TOURING LIBRARIES

Principal Funders



Supported using public funding by  
**ARTS COUNCIL  
ENGLAND**



Local Authorities



Ribble Valley  
Borough Council  
[www.ribblevalley.gov.uk](http://www.ribblevalley.gov.uk)



**wyre**  
council

Partners



Supported using public funding by  
**ARTS COUNCIL  
ENGLAND**



**Culturapedia**



**FOLKUS**

*The Folk Arts Network of the North West*



**THE LOWRY**  
ART & ENTERTAINMENT

Email: [hello@spotonlancashire.co.uk](mailto:hello@spotonlancashire.co.uk)

Website: [www.spotonlancashire.co.uk](http://www.spotonlancashire.co.uk)



Brochure design:  
[www.sourcecreative.co.uk](http://www.sourcecreative.co.uk)