



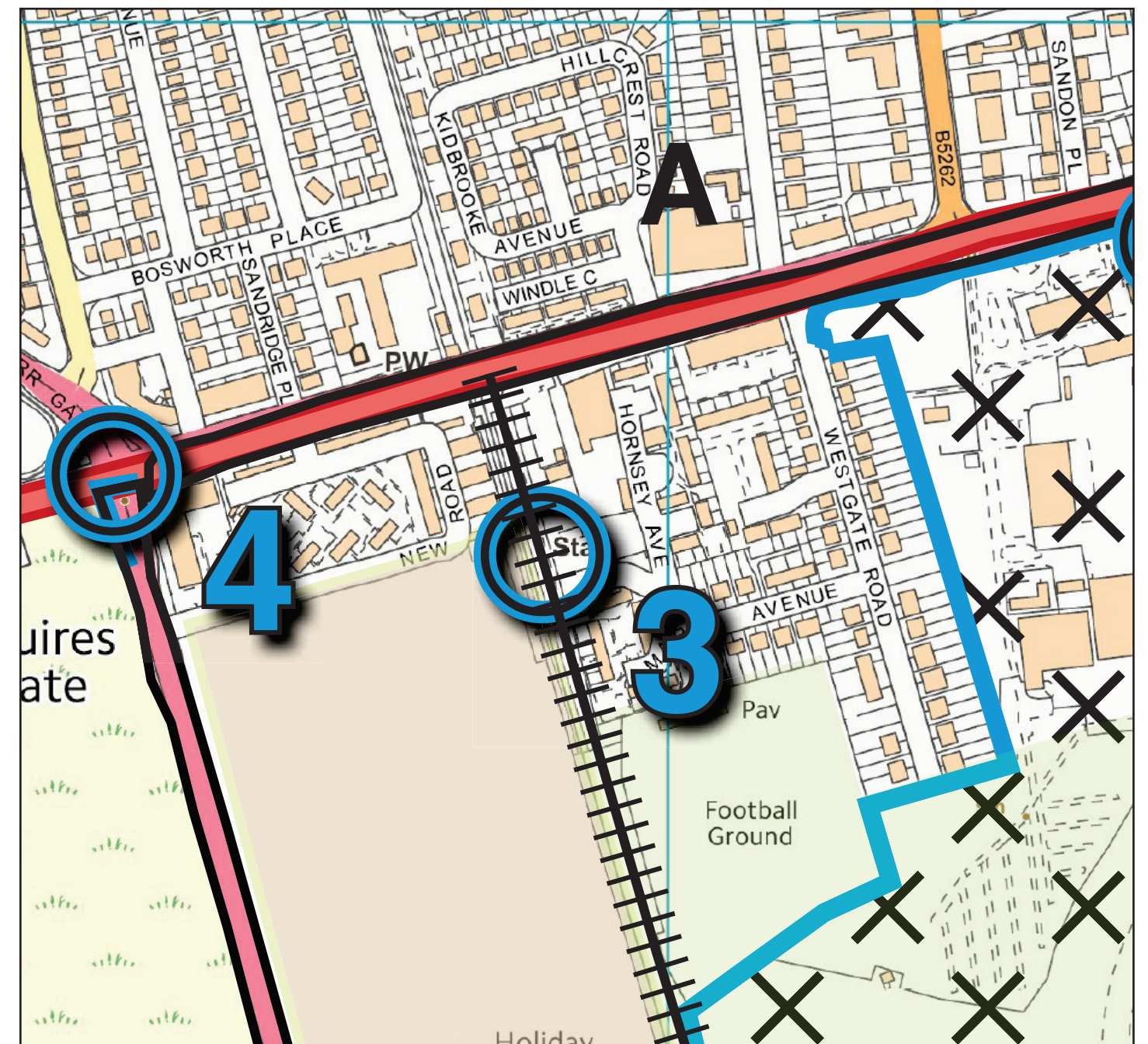
3 - Squires Gate railway station

Secondary: Northern rail gateway

Squires Gate railway station is an underutilised gateway potentially serving the airport, and the northern residential areas of St. Anne's. The station environment is poor and unfriendly.

Improvements could include:

- improved passenger shelter facilities
- landscaping and public realm
- signage/ public art/ lighting
- visitor information
- Improved pedestrian access - at the present only a staircase



4 - Squires Gate Lane (A5230)/Clifton Drive North (A584)

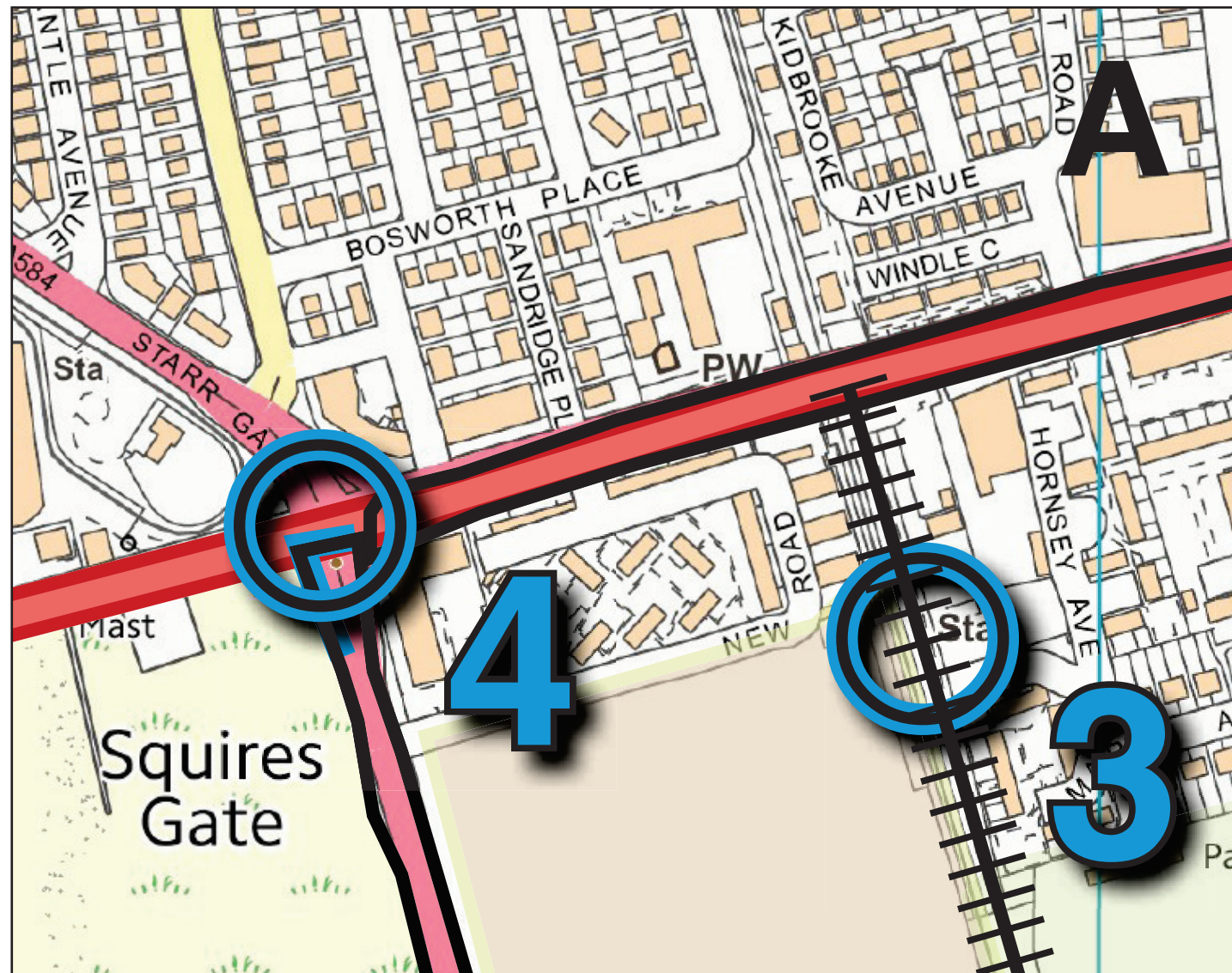
Major: Major shared (beach) gateway with Blackpool

This is a key strategic gateway for both St. Anne's and the Blackpool Resort. The gateway has a number of strong visual elements including the beach and dunes and the new Blackpool Tram terminus.

This gateway also marks the transition from the Blackpool Resort to St. Anne's.

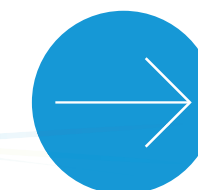
improvements could include:

- landscaping and public realm
- thematic signage/ public art/ lighting
- key theme of transition from Blackpool to the St. Anne's "garden town"



St. Anne's on the Sea

Neighbourhood Development Plan





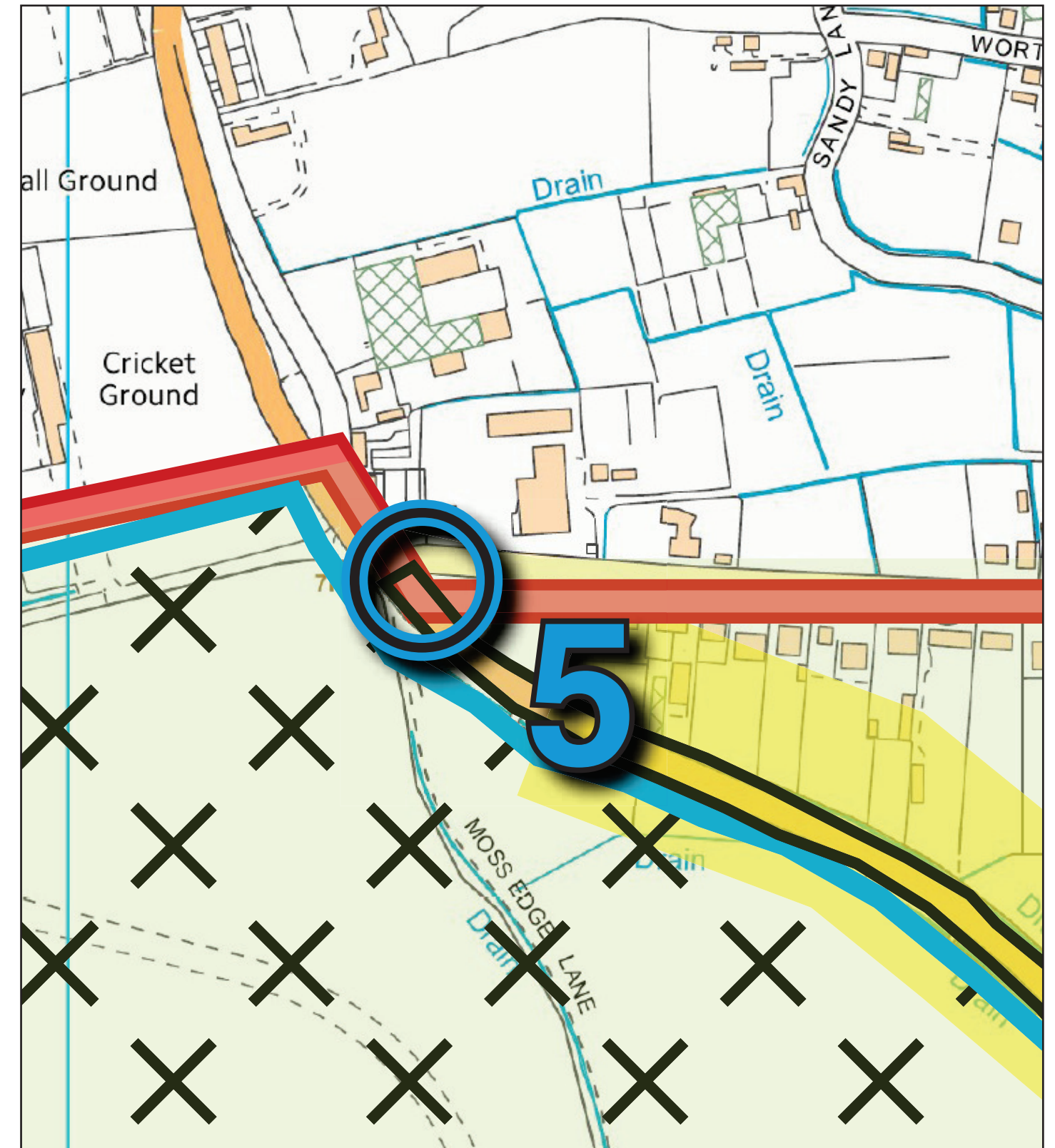
5 - Queensway/Division Lane

Secondary: Eastern urban edge gateway (key route to town centre from M55/Squires Gate Lane)

This gateway marks the north eastern edge of St. Anne's and is currently marked by an existing landscaped feature constructed by the town council.

Improvements could include

- thematic signage/ public art
- landscape management



6 - Heyhouses Lane (B5261), St. Anne's Road East (B5233)

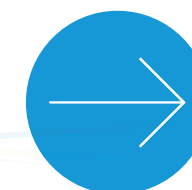
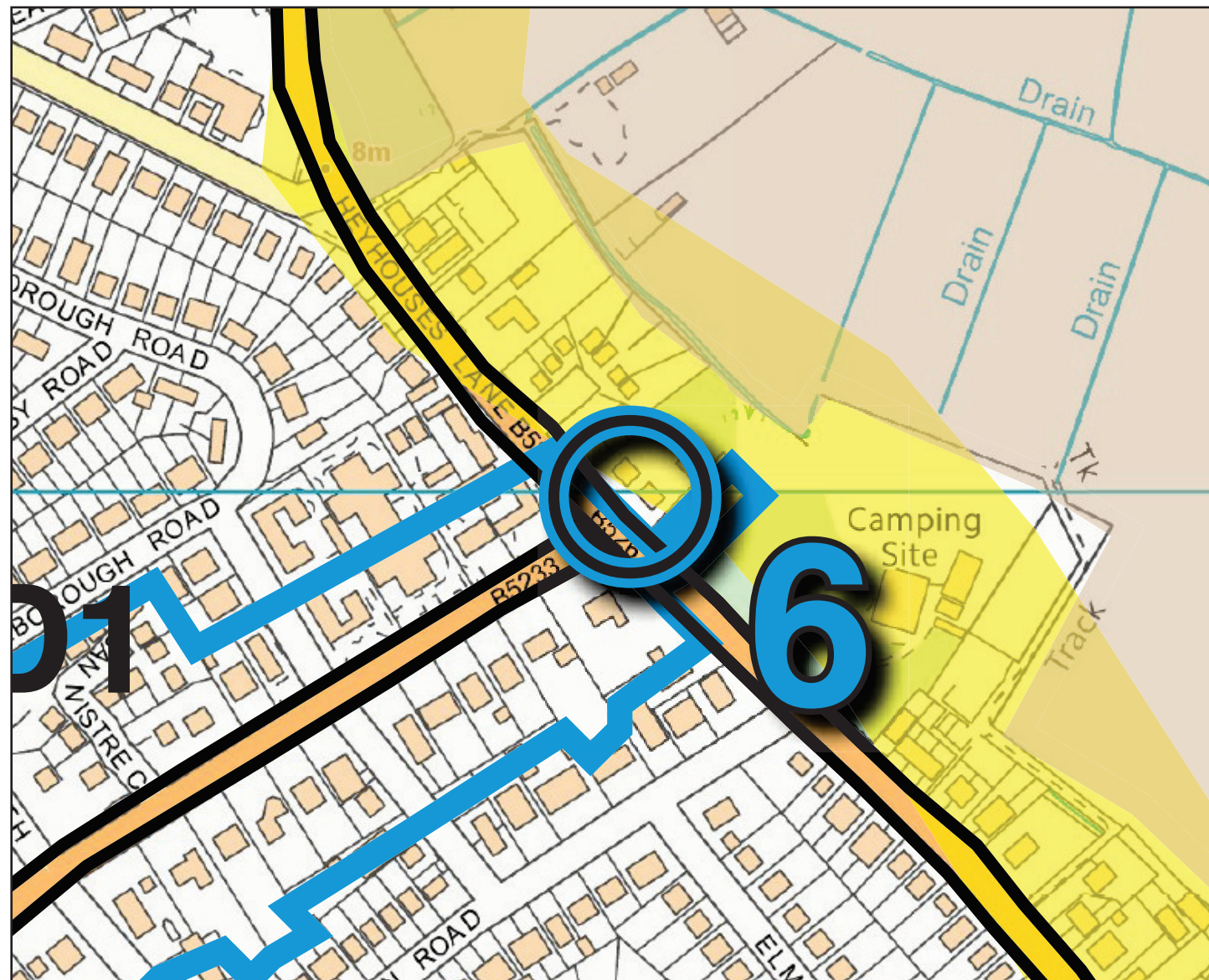
Secondary: Gateway to urban core of St. Anne's

This "internal gateway" marks the eastern entrance to the core of the town through the St. Anne's Road east conservation area to the town centre.

The built up residential nature and land constraints limit options for gateway improvement.

Improvements could include:

- thematic signage, e.g. St. Anne's East conservation area, signage to town centre, beach etc
- encourage improvements to residential boundaries at junction of Heyhouses Lane and St. Anne's Road East





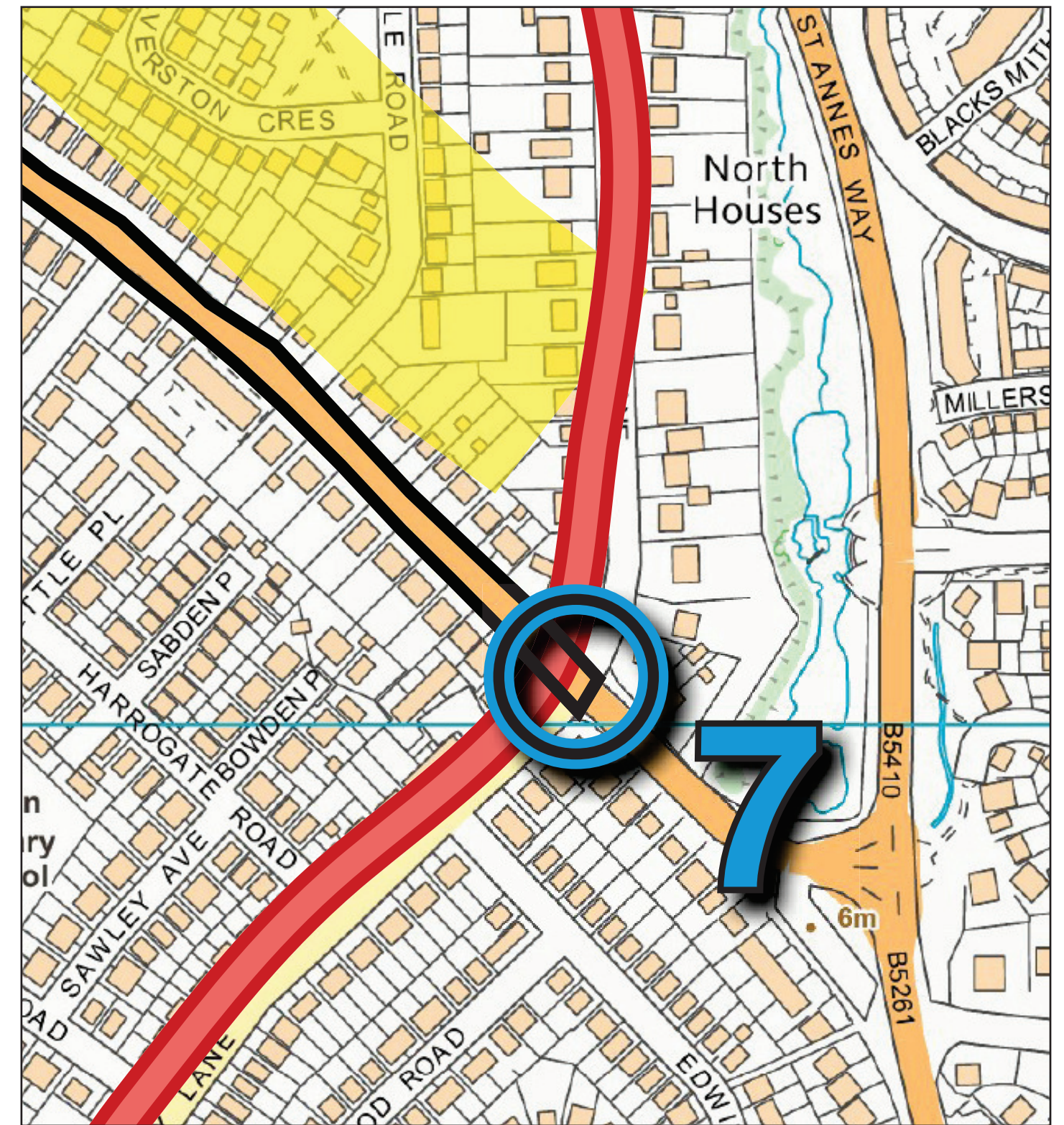
7 - Heyhouses Lane Blackpool Road (B5261)

Secondary: Gateway marking north eastern entrance from Lytham

The gateway between St. Anne's and Lytham at the junction of Heyhouses and Blackpool Road is already well defined by the Japanese garden style public realm feature marking the entrance to the Cypress Point housing development.

Improvements could include:

- thematic signage at the actual parish boundary just to the north of the junction



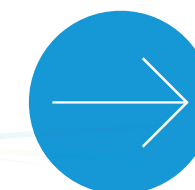
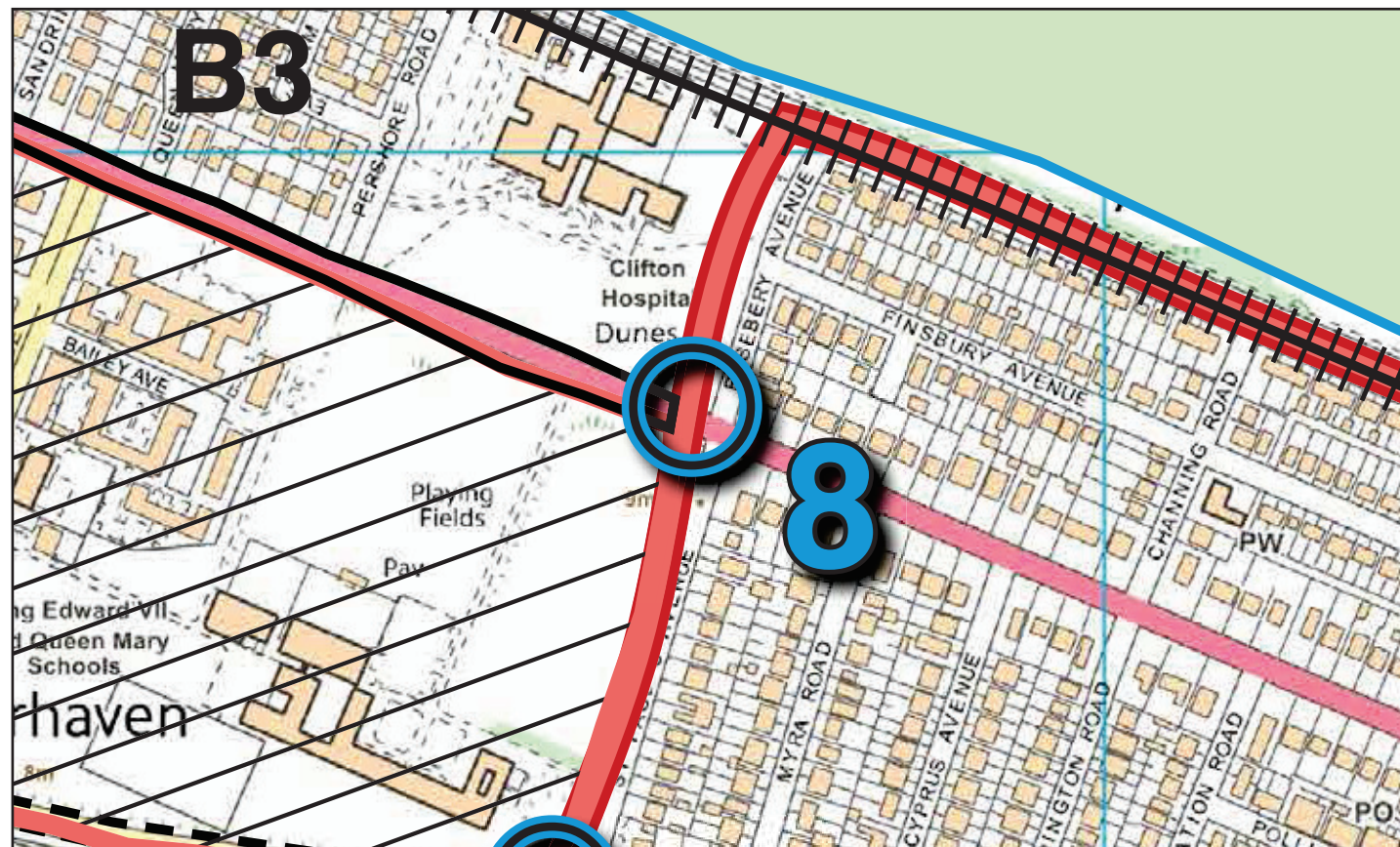
8 - Clifton Drive South (A583)/St. Paul's Avenue

Major: Gateway marking main southern access from Lytham/Preston

This gateway marks the boundary between Lytham and St. Anne's when travelling along Clifton Drive. The open nature of the hospital and school grounds within the St. Anne's boundary contrasts with the residential development to the south of St. Paul's Avenue.

Subject to gaining the permission of land owners there is potential for a range of gateway solutions here including:

- landscaping and public realm
- thematic signage/ public art/ lighting/ interpretation of adjoining nature areas
- Clifton Drive/St. Paul's Avenue. is of historic importance. St. Paul's Avenue is a purpose built boulevard, and designed as part of the Fairhaven development landscape proposals, prepared by Thomas Mawson and Sons. It is important to retain historic street columns and central reservation/verges with the possibility of street tree planting to emphasis the 'boulevard' character

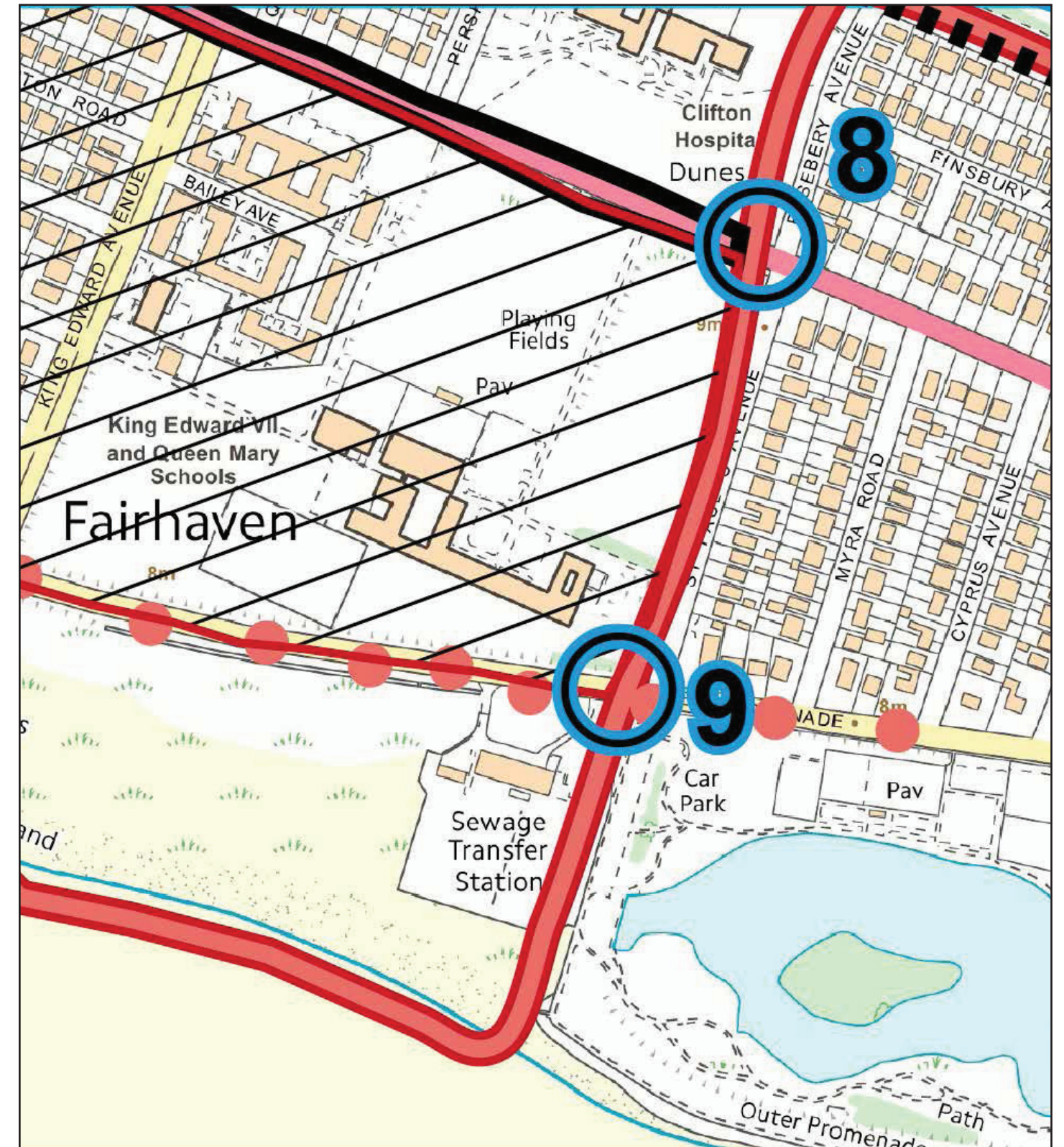




9: Inner Promenade/ St. Paul's Avenue

Secondary: This gateway marks the boundary between Lytham and St. Anne's when travelling along the Inner Promenade. Key land uses include the adjoining Fairhaven Park, school grounds, and open space fronting the dunes.

- Any gateway feature in this location should respect the dramatic "Spitfire" sculpture in the adjoining Fairhaven Park.

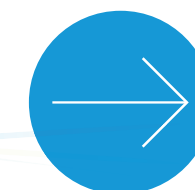
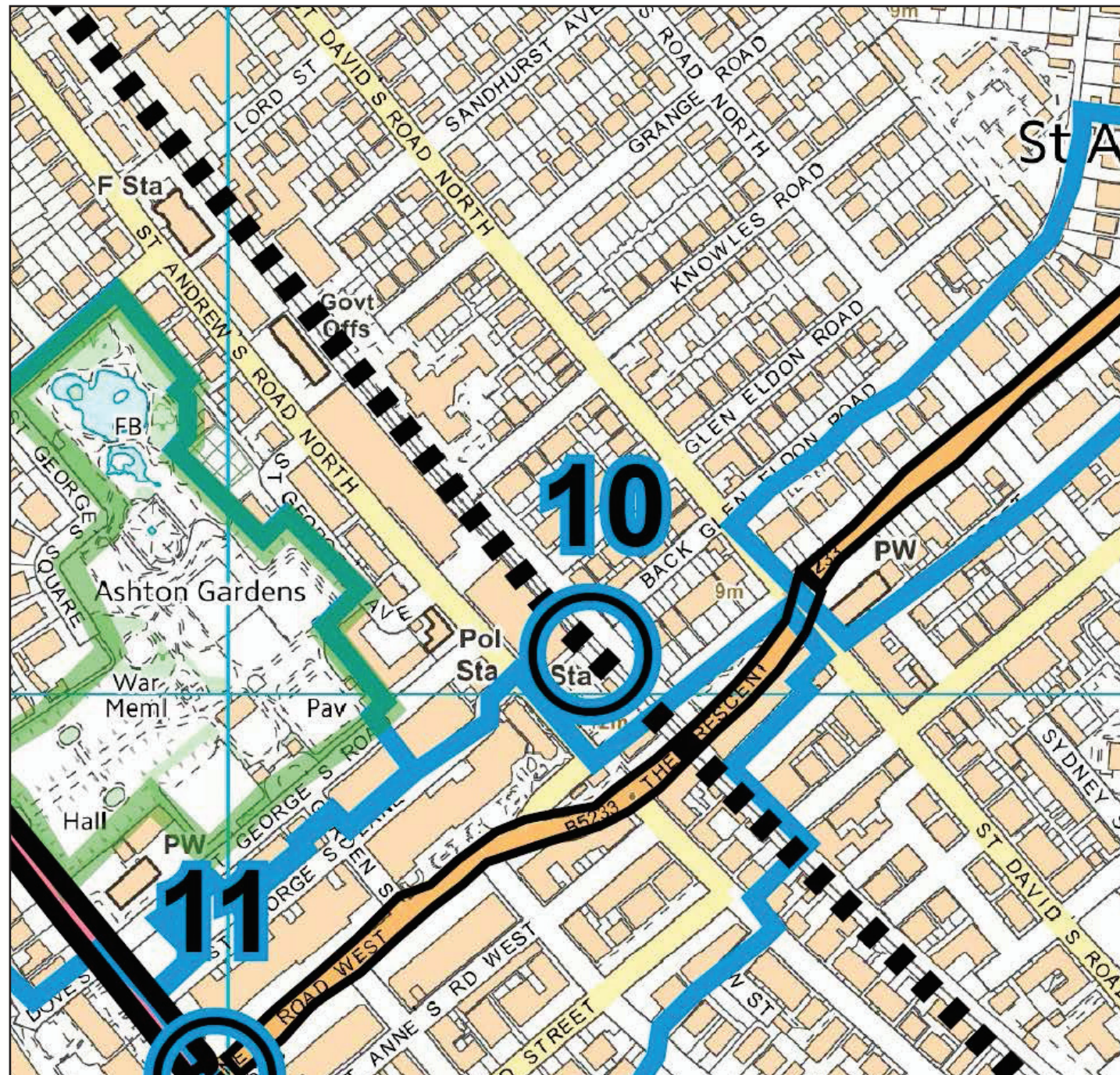


10 - St. Anne's railway station

Major: Main public transport gateway to the town centre

This is the major public transport gateway to the town. Although the station and its environs are of a high standard there is scope for further improvements including:

- landscaping and public realm
- thematic signage/ public art/ lighting
- visitor information



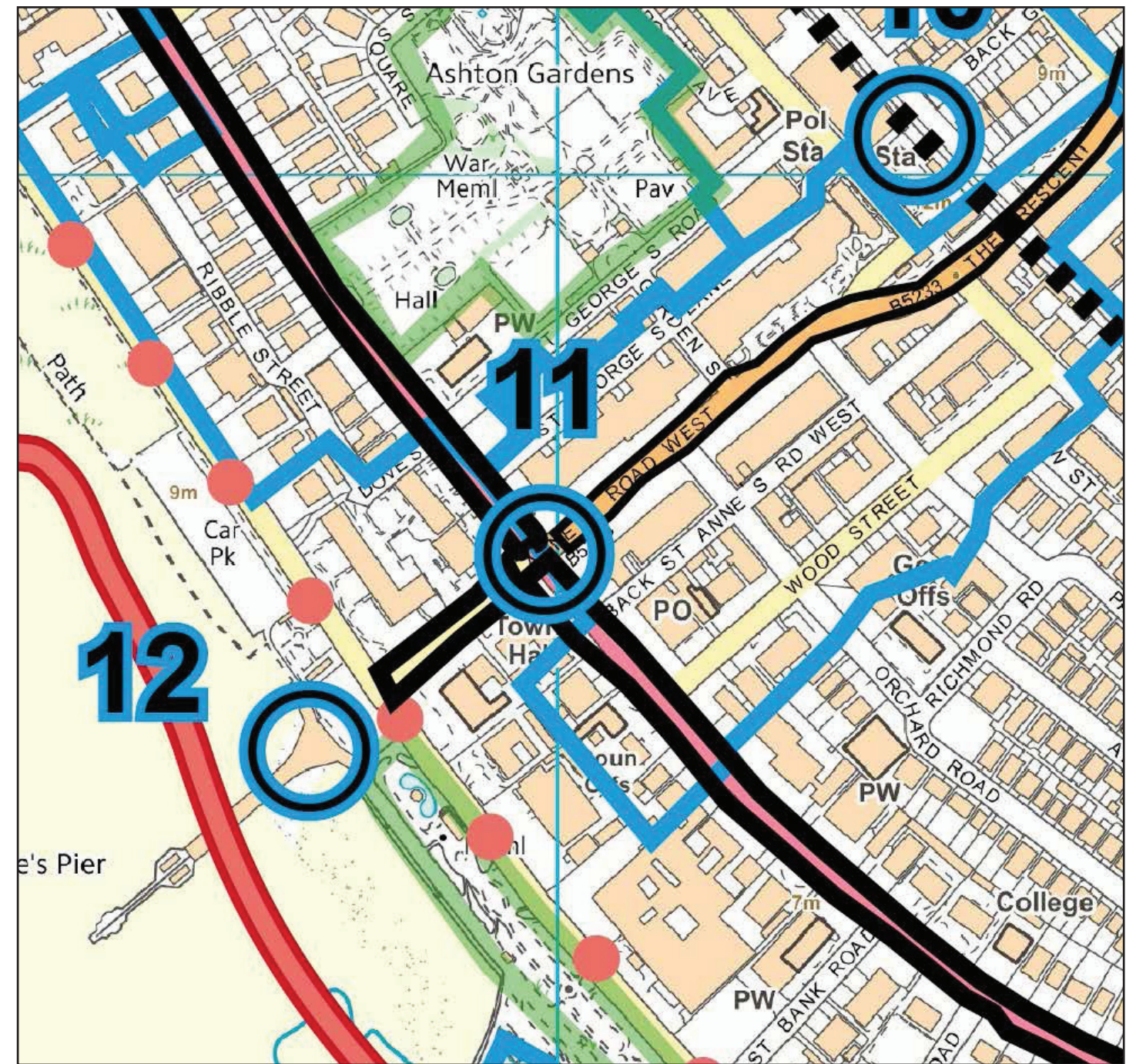


11 - Clifton Drive (A583)/St. Anne's Road West

Major: Gateway to town centre and promenade

This internal gateway marks the arrival at the town centre Core of the town. Whilst the town centre (East side) has benefited from the high quality public realm improvements the modern apartment block and Lord Derby Pub (west side) offer potential for gateway improvements:

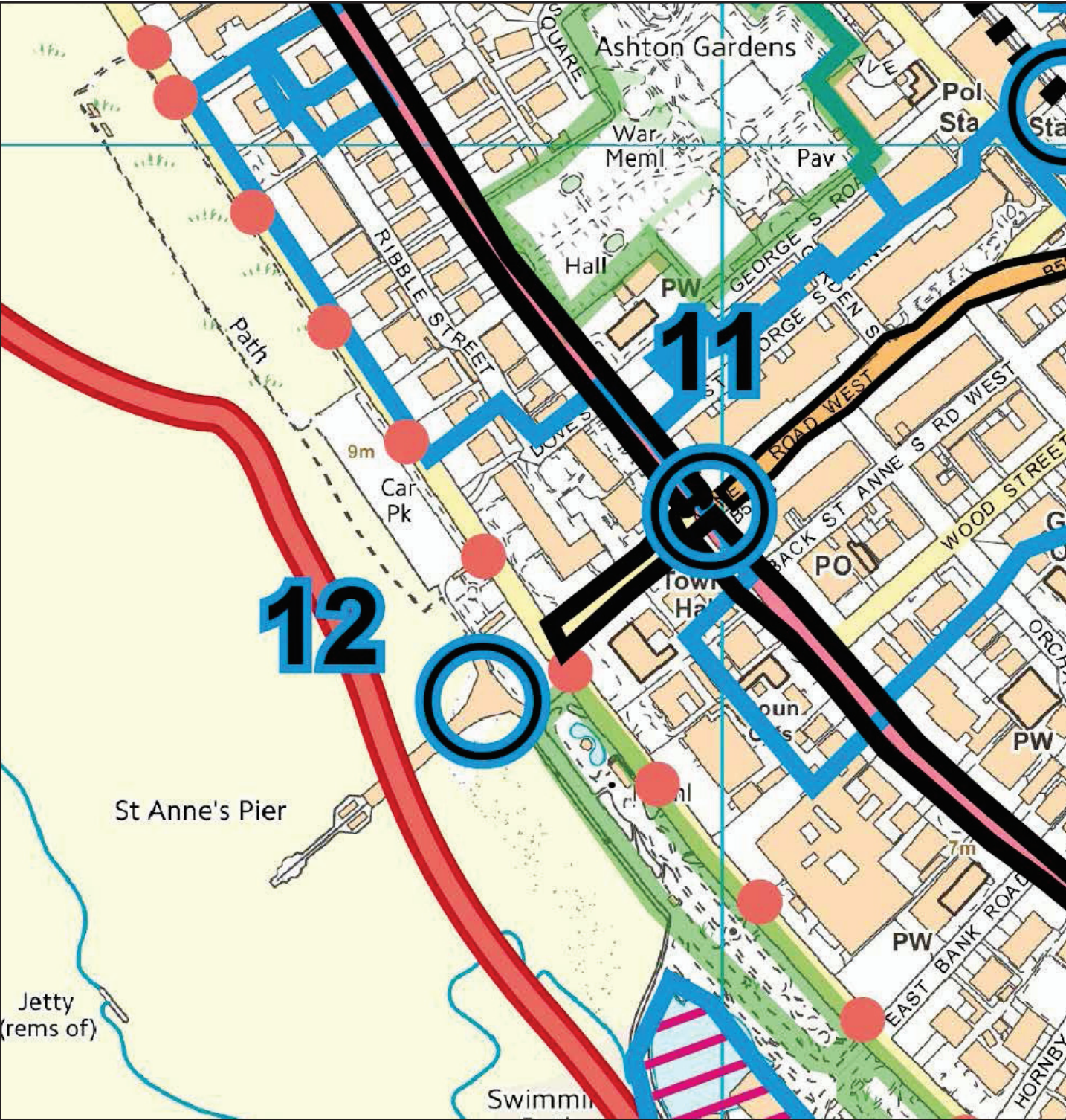
- thematic signage, e.g. St. Anne's town centre conservation area, signage to pier, resort core, beach etc
- landscaping improvements to apartment block and pub sites
- improvements to elevations of existing apartment block as part of any planned maintenance



I2 - St. Anne's Pier

Major: This gateway marks the centre of the resort area, and is a gateway to the historic pier, beach, Promenade Gardens and the Island Leisure area.

Careful consideration will need to be given to any gateway or arrival features in this location as it will form the context for (and impact on the setting of) the pier which is Listed, and may be viewed from the Town centre and the Resort area.





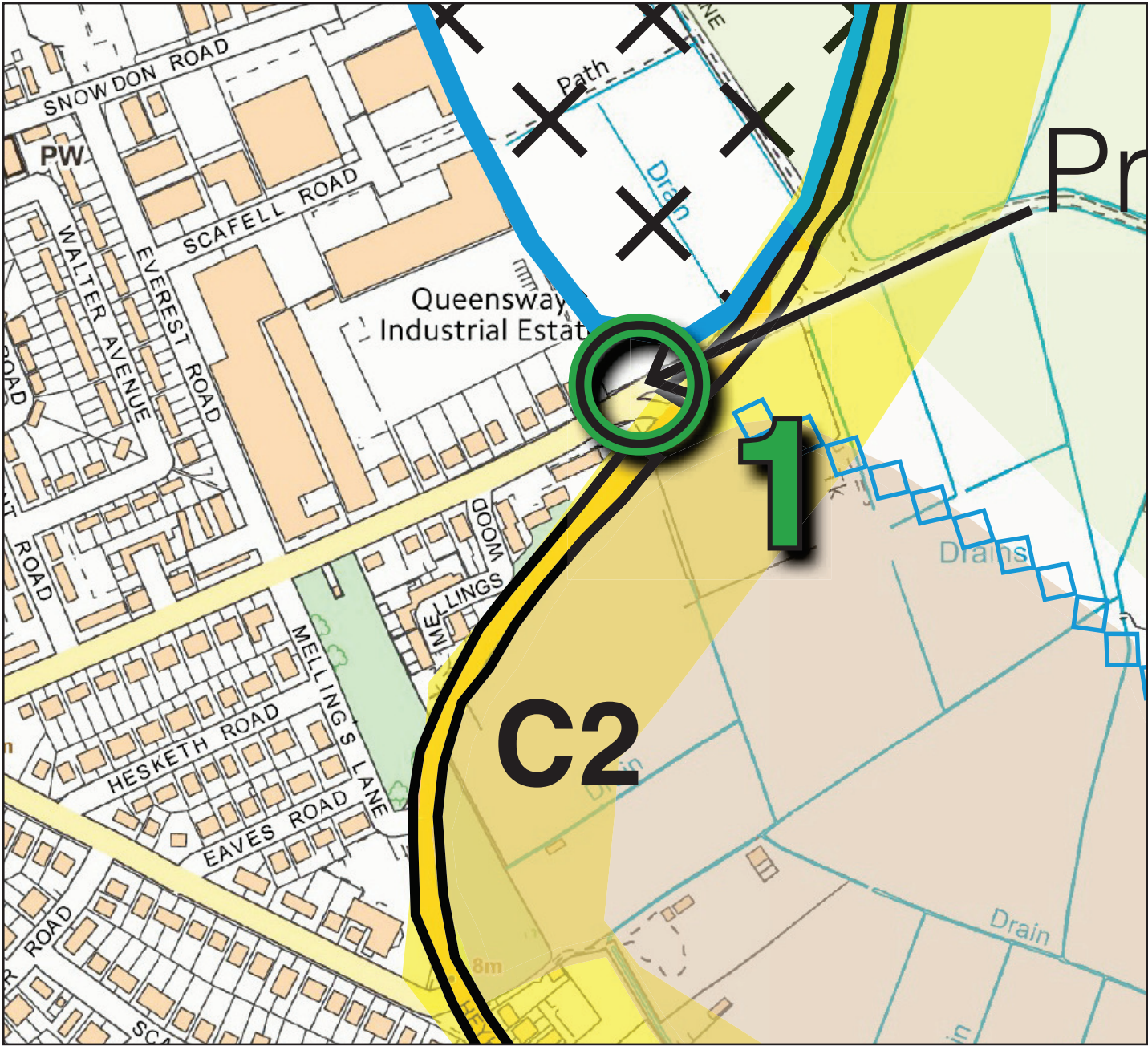
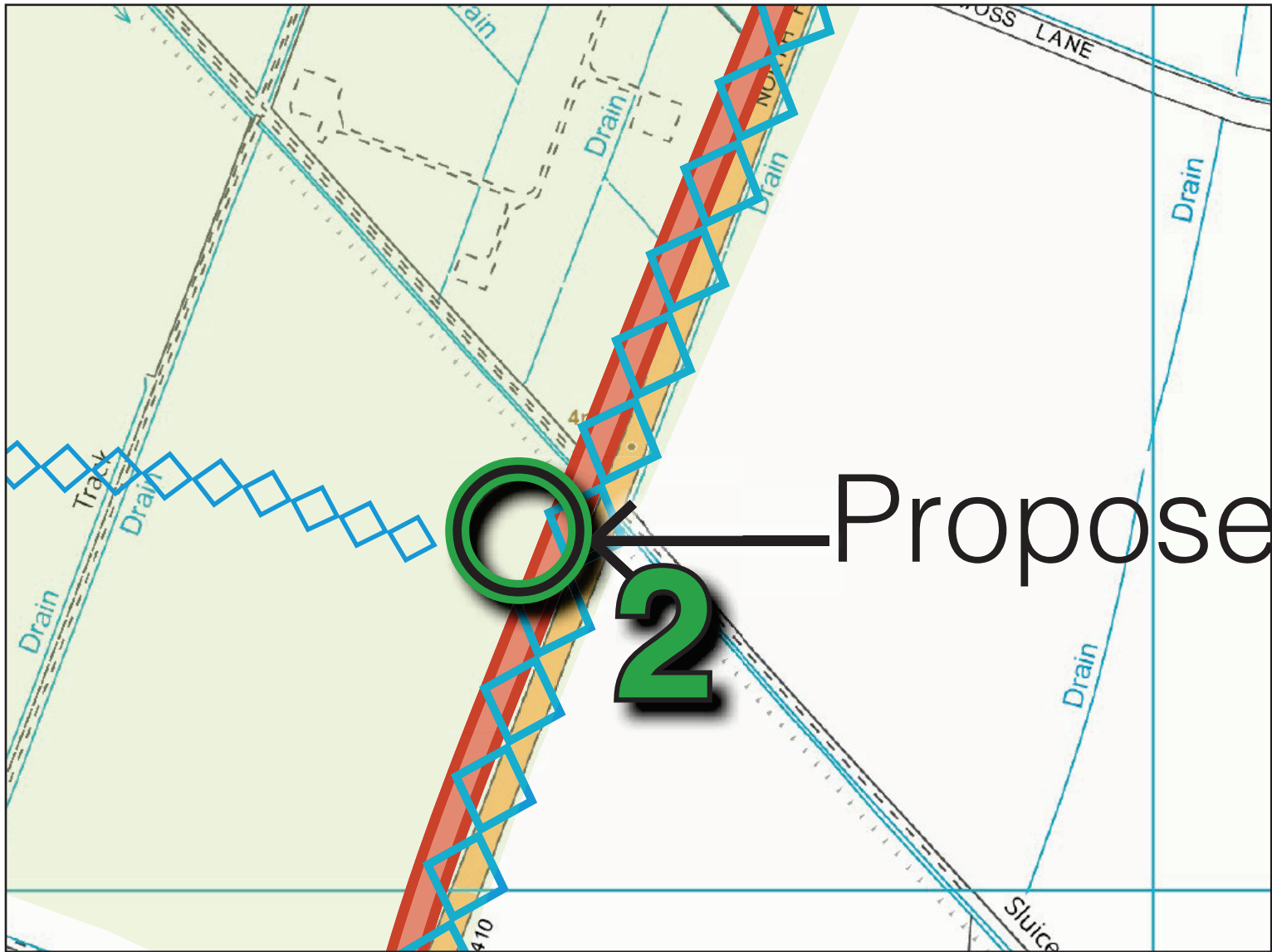
Proposed gateways:

PI-P2 M55 Link Road/Heyhouses Bypass

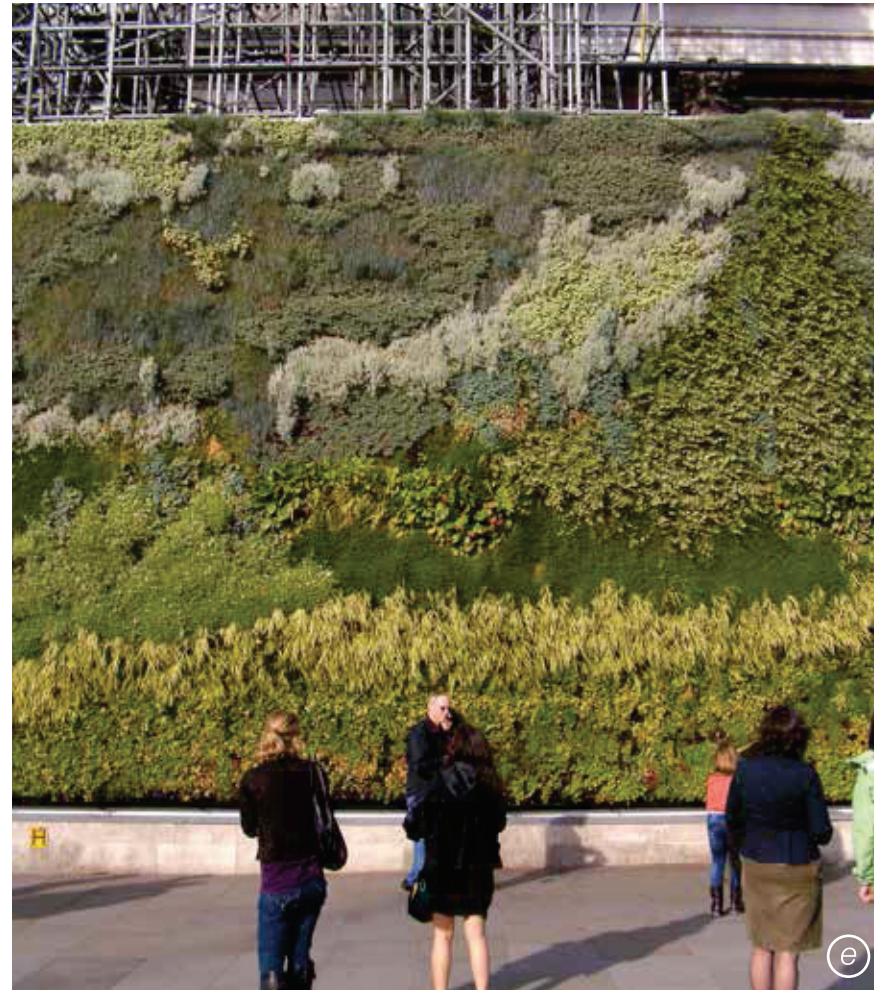
If these roads are constructed as part of the proposed Queensway Urban Extension then this will become the major gateway to the town (and Lytham) from the M55 and to the proposed major residential development

Potential design solutions include:

- thematic signage
- landscaping
- public art
- appropriate set -back for any adjacent construction



Exemplar ideas for gateway enhancement



St. Anne's on the Sea Neighbourhood Development Plan





St. Anne's on Sea Town Council
West Lodge, 5 St. George's Road
St. Anne's on Sea
FY8 2AE

<http://www.stannesonthesea-tc.gov.uk>