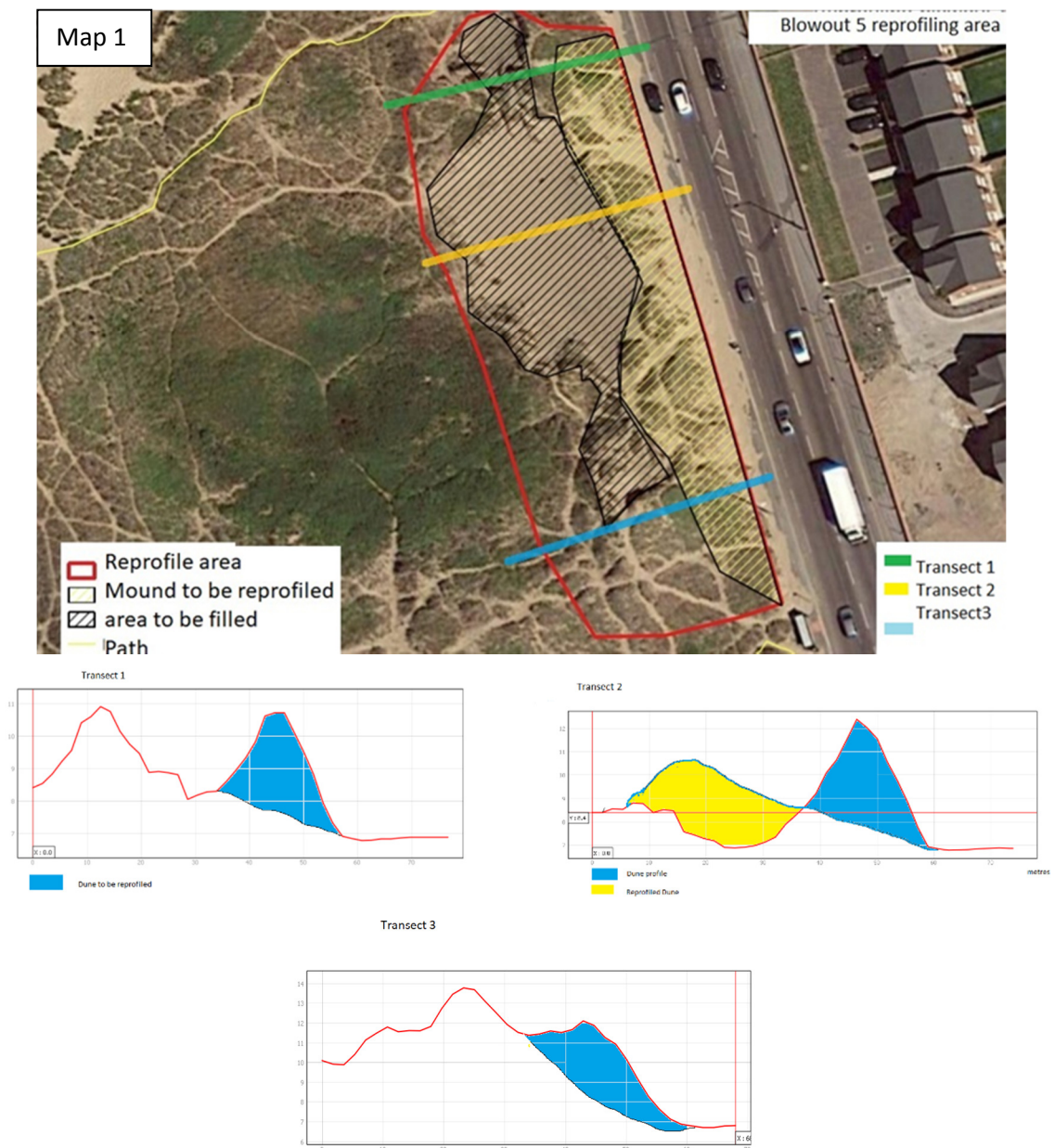


Blowout 5 reprofiling

Equipment

- Barriers – 200m heras fencing, potentially plastic interlocking bollards to stop sand movement if needed
- 12 tonne excavator with over 6m reach
- Large dumper and JCB (JCB - Blackpool council beach cleansing team)
- Canes and hazard tape for boundaries
- Eco-matting
- Marram grass

Work area



Map1. Map shows area of blowout 5, mound to be reprofiled and areas to be filled.

Transects. Each transect depicts a cross section of blowout 5 marked clearly on the map key.

Method

Start period, subject to planning approval: February 2020

The area of bare sand shown in Picture 1 will be used as access to the blowout. Once machinery and tools are in-situ the sand wall will be rebuilt to reduce windblown sand on to the road whilst work commences. The project may require the short term closure of one road lane to allow for safe machinery access.



Picture 1. Highlighted area shows access point to the blowout from Clifton Drive North, opposite the new Persimmon homes build.

Work will begin from inside the blowout, pulling sand back away from the road into the blowout. Sand will be piled on the area dominated by bramble. Current rabbit warrens will be marked with canes so that no sand is dumped in these areas.

Once the steep roadside dunes have been lowered to a suitable height, work will focus on redistributing the sand to fill the blow out and create a smooth shallower slope no more than 30 degrees. If possible any vegetation from the top of the dunes will be placed to one side and then added to the reprofiled slope later.

Once the area has been reprofiled eco-matting will be placed on top of the bare sand and planted up with marram grass plug plants. Some marram grass translocation will also happen in this area.