

DECISION ITEM

REPORT OF	MEETING	DATE	ITEM NO
DEVELOPMENT SERVICES DIRECTORATE	ENVIRONMENT, HEALTH AND HOUSING COMMITTEE	20 JUNE 2017	4
HOME ENERGY CONSERVATION ACT (HECA) FURTHER REPORT 2017			

PUBLIC ITEM

This item is for consideration in the public part of the meeting.

SUMMARY

The Home Energy Conservation Act 1995 places requirements on Local Authorities to reduce emissions of Carbon Dioxide to the atmosphere by improvements to the energy efficiency of the residential dwellings within the area. In July 2012 the government issued additional guidance under the act which requires the Council to issue further reports on progress being made and future improvements to be made in the future.

A first further report was issued in 2013 and in 2015 the second such report in accordance with the guidance was published. Further reports are required to be published at two yearly intervals. As such a new report is required for 2017.

RECOMMENDATION

The Committee is requested:

1. To approve the Home Energy Conservation Act 1995 further report of March 2017.

SUMMARY OF PREVIOUS DECISIONS

1. The first further report was approved by the Portfolio Holder for Social Wellbeing in July 2013.
2. The second further report in 2015 was approved by Cabinet at its meeting on 25 March 2015 following consideration by the Policy Development Scrutiny Committee on 12 March 2015.

CORPORATE PRIORITIES

Spending your money in the most efficient way to achieve excellent services (Value for Money)	
Delivering the services that customers expect of an excellent council (Clean and Green)	✓
Working with all partners (Vibrant Economy)	✓
To make sure Fylde continues to be one of the most desirable places to live (A Great Place to Live)	✓
Promoting Fylde as a great destination to visit (A Great Place to Visit)	✓

REPORT

1. The Home Energy Conservation act 1995 (HECA) requires local authorities to take action to ensure the reduction of emissions of carbon dioxide into the atmosphere that arise from domestic dwellings within its area.
2. In July 2012 the government issued guidance under HECA. The guidance required local authorities to prepare and publish further reports under HECA to detail the actions the council is taking to meet the requirements of the legislation. The first of these reports was published in 2013. The second in 2015 and currently the third in 2017. The reports are required to be updated every two years.
3. Account has been taken of the guidance in the preparation of the 2017 HECA further report that is attached to this report. The HECA report requires adoption by the council following which it needs to be publicised on the council's web site. Following publication the appropriate secretary of state will be notified and provided with a web site link to the document. It is proposed that the HECA report be published in draft form before the 31st March 2017 pending approval/amendment from the Environment, Health and Housing committee at the June 2017 meeting.
4. The HECA report includes details of actions being taken by the council to improve the energy efficiency of dwellings within its area. Where possible Fylde intends to work in partnership with other Lancashire authorities facilitated by the Lancashire Energy Officers group and the Cosy Homes in Lancashire (CHiL) operational group. Fylde is represented at both of these groups by the Principal Housing Services Officer.
5. Members may wish to note three issues from the preamble to the HECA report below;
 - Fuel poverty within Fylde is reported at 8.8% (2014 levels are the most current data available) which is the third lowest in the county and below both the Lancashire and England averages. However this figure is rising on the previous reported years of 8.1%.
 - Carbon dioxide emissions are falling year on year within the Fylde district as they are across Lancashire (see attached document one)
 - That as a collective unit of district authorities in Lancashire £5,155,253 of external funding for energy efficiency measures in domestic properties has been bid for awarded and delivered between September 2014 and December 2016.

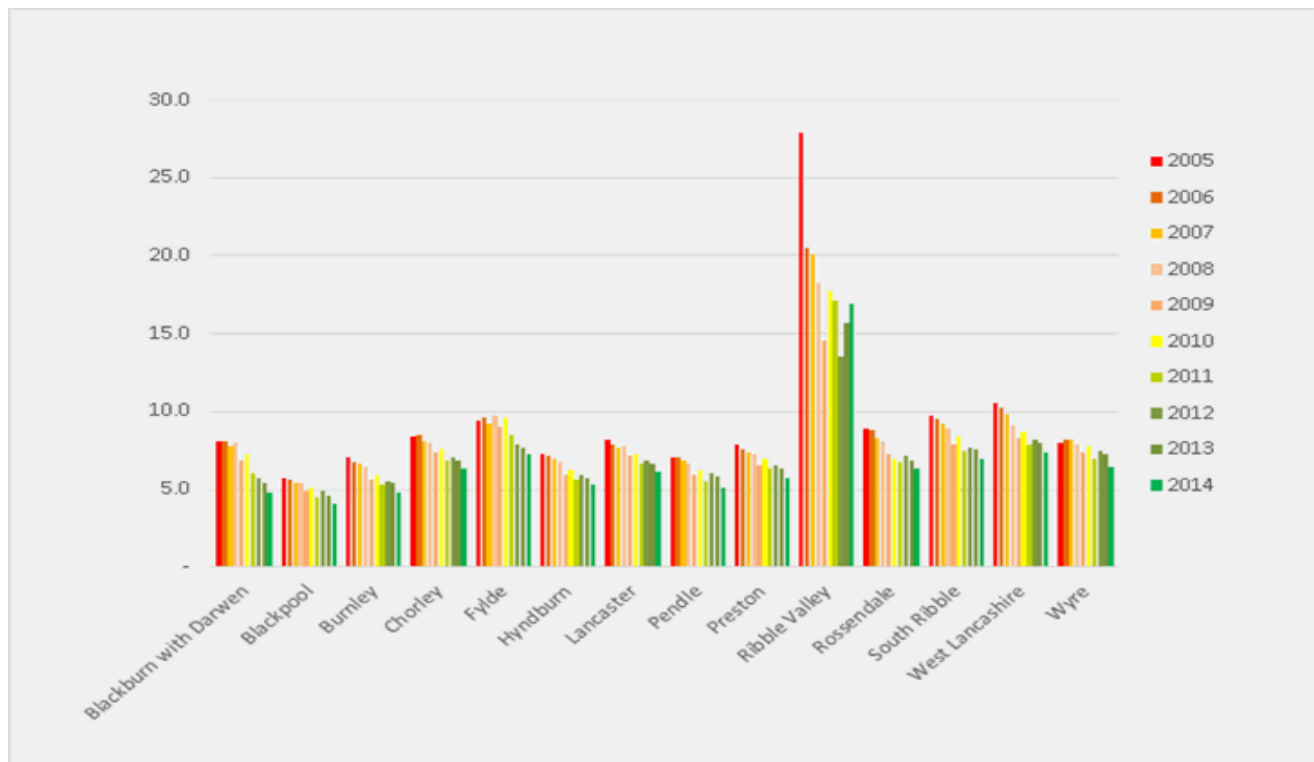
IMPLICATIONS	
Finance	The cost to the Council of meeting its obligations under HECA will be contained within existing approved revenue budgets.
Legal	It is a legal requirement to comply with HECA and account is to be taken of guidance issued by central government
Community Safety	None
Human Rights and Equalities	None
Sustainability and Environmental Impact	Improvements in energy efficiency will have a beneficial impact on the environment and will contribute positively to sustainability.
Health & Safety and Risk Management	None

LEAD AUTHOR	CONTACT DETAILS	DATE
Tom Birtwistle	Tom.birtwistle@fylde.gov.uk 658691	10/3/2017

BACKGROUND PAPERS		
Name of document	Date	Where available for inspection
Home Energy Conservation Act further report 2013	6/2013	Decision report produced 2013
Home Energy Conservation Act further report 2015	12/3/2015	Decision report produced 2015
Affordable Warmth scheme	10/1/2017	Decision report produced 2017
Energy Efficiency measures delivered across Lancashire	2016	See below attached document
Lancashire county council report into fuel poverty	10/2016	http://www.lancashire.gov.uk/lancashire-insight/deprivation/fuel-poverty.aspx
Fylde local plan to 2032	15/6/16	http://www.fylde.gov.uk/council/planning-policy--local-plan-/local-development-framework/
Securing our health and wellbeing	2016	http://www.lancashire.gov.uk/media/898727/public-health-annual-report-2016.pdf
Carbon Dioxide Emissions in Lancashire	7/2016	http://www.lancashire.gov.uk/lancashire-insight/environment/carbon-dioxide-emissions.aspx

Attached documents:

1. Co2 Levels across Lancashire districts over time
2. Measures delivered across Lancashire under energy saving schemes September 14-December 16.
3. HECA FURTHER REPORT, MARCH 2017: Fylde Council



Source: <http://www.lancashire.gov.uk/lancashire-insight/environment/carbon-dioxide-emissions.aspx>

CHiL Summary of Measures and Funding

September 2014 - December 2016

Funder	Measure	Project Total Numbers	ECO Funding £	DECC Health & Fuel Poverty £	DECC CHF £	Other funding (GDHIF, Charity etc) £	Total Funding £
	CHiL Referrals	2584					
	Energy Advice	1577					
Ethika	External Wall Insulation	84	248,316	0	0	336,000	584,316
Npower	Cavity Wall Insulation	131	65,500	0	0	0	65,500
Npower	Loft Insulation - virgin	66	33,000	0	0	0	33,000
Npower	Loft Insulation - Top Ups	46	19,850	0	0	0	19,850
Npower	External Wall Insulation	164	129,150	0	0	726,850	856,000
SSE	Cavity Wall Insulation	30	12,375	0	0	0	12,375
SSE	Loft Insulation - Top-ups	20	3,300	0	0	0	3,300
SSE	Boiler Replacements	182	277,800	0	0	0	277,800
BGET	Boiler Replacements/CH	60	0	0	0	113,000	113,000
DECC	Heating Systems	70	0	44,000	0	0	44,000
Scottish Power	Boilers/Central Heating	63	51,977		0	0	51,977
Anesco	Cavity Wall Insulation	34	24,343	0	0	0	24,343
Energy 64	Cavity Wall Insulation	18	12,238	0	0	0	12,238
City Energy	Room In Roof Insulation	270	285,324	0	0	0	285,324
City Energy	Cavity Wall Insulation	26	10,400	0	0	0	10,400
City Energy	Loft Insulation	18	2,880	0	0	0	2,880
City Energy	Boiler Replacements	82	102,480	0	0	0	102,480
Hughes (own fund	Cavity Wall Insulation	489	220,050	0	0	0	220,050
Hughes (own fund	Loft Insulation	69	12,420	0	0	0	12,420
DECC CHF	First Time Central Heating	615	183,000	0	2,159,000	0	2,342,000
DECC CHF	Cavity Wall Insulation	60	0	0	21,600	0	21,600
DECC CHF	Loft Insulation	160	0	0	27,200	0	27,200
DECC CHF	External Wall Insulation	30	0	0	30,000	0	30,000
DECC CHF	Draught-proofing	100	0	0	3,200	0	3,200
Totals (not including Advice)		2887	£1,694,403	£44,000	£2,241,000	£839,850	£5,155,253

Source: CHiL operational group report presented at Lancashire Energy Officers meeting 8th February 2017

ACTION	OUTCOMES	TIMING
i) LOCAL ENERGY EFFICIENCY AND FUEL POVERTY AMBITIONS AND PRIORITIES		
Lancashire Health & Wellbeing Strategy / Board	<p>The Health and Wellbeing Board vision is that: 'We want every citizen in Lancashire to enjoy a long and healthy life'. Lancashire is moving towards the preventative agenda and its overarching goals are:</p> <ul style="list-style-type: none"> ▪ Better health – increase the time that people in Lancashire can expect to live in good health, and narrow the gap in health and wellbeing. ▪ Better care – deliver measureable improvements in people’s experience of health and social care services ▪ Better value – reduce the cost of health and social care, whilst increasing its effectiveness by promoting collaboration and integration between partners <p>The Board is committed to:</p> <ul style="list-style-type: none"> ▪ Shift resources towards interventions that prevent ill health and reduce demand for hospital and residential services ▪ Build and utilise the assets, skills and resources of our citizens and communities ▪ Promote and support greater individual self-care and responsibility for health; making better use of information technology and advice ▪ Commit to delivering accessible services within communities; improving the experience of moving between primary, hospital and social care ▪ Make joint working the default option ▪ Work to narrow the gap in health and wellbeing and its determinants 	Ongoing
Health Inequalities in Lancashire, Joint Strategic Needs Assessment (JSNA)	<p>The JSNA for health inequalities in Lancashire provides analysis of inequalities in health and the causes of poor health, between deprivation groups. It identifies narrowing the gap in respiratory and cardiovascular diseases (CVD) as two of the top ten goals for improving the health of Lancashire's population. These are conditions known to be affected by having a cold home (NICE Guidance).</p>	Ongoing

Report of the Director of Public Health and Wellbeing 2016	The 2016 Report of the Director of Public Health and Wellbeing , 'Securing Our wellbeing' identifies fuel poverty as one of the social, economic, environmental determinants of health and wellbeing.	2016-17 and ongoing review
Fuel Poverty	<p>Fuel poverty targets have not been set but all partners are working towards reducing fuel poverty.</p> <p>In 2014 (latest figures available) the Lancashire 14 districts had 71,075 households in fuel poverty (11.3%). Whilst above the national average, the gap has narrowed with fuel poverty increasing slightly in England but decreasing slightly in the Lancashire between 2013 and 2014. In particular, those districts in Lancashire with the worst fuel poverty in 2013 have improved their position in 2014. Pendle (14.0%) had the 20th worst rate in the country (an improvement from 7th in 2013). Burnley was in 27th place (13.5%), an improvement from 16th in 2013, Blackpool 32nd (13.2%), up from 17th in 2013 and Hyndburn 40th (13.0%), an improvement from 22nd in 2013, out of 326 authorities across England.</p> <p>8.8% of Fylde properties are classified as fuel poor households. This ranks Fylde as the 3rd lowest district in relation to levels of fuel poverty in Lancashire and under both the English average of 10.6% and the Lancashire average of 11.3%.</p> <p>Further information is available here: http://www.lancashire.gov.uk/lancashire-insight/deprivation/fuel-poverty.aspx</p> <p>An interactive map of fuel poverty in Lancashire is available here: http://dashboards.instantatlas.com/viewer/report?appid=76dd5dc8c5b041458608752ffd11b67a&aut hid=EeUdmTVM2tQfwwHh</p>	Ongoing
Lancashire Climate Change Strategy	<p>Although the partnership no longer meets the Lancashire Climate Change Strategy sets out the long term vision that Lancashire is “low carbon and well adapted by 2020” with a target to reduce carbon dioxide emissions by at least 34% (relative to 1990) by that time.</p> <p>A summary of the latest CO₂ figures for Lancashire is available here: http://www.lancashire.gov.uk/lancashire-insight/environment/carbon-dioxide-emissions.aspx</p> <p>CO2 figures measured in Fylde (as they do across Lancashire) have shown a year on year fall. See attached document 1.</p>	2020

Fylde Local Plan to 2032	<p>Fylde Council's local plan to 2032 is in the final stages of independent inspection with a view to being confirmed by mid to late 2017. Within the local plan the following is stated.</p> <p>"It is a national requirement that councils adopt policies that seek to mitigate against and adapt to climate change. Policy GD7 includes measures to achieve this through the design of new development and the use of natural resources.</p> <p>Policy GD7 Achieving Good Design in Development General Principles of good design D. Taking account of landform, layout, building orientation, massing and landscaping to minimise energy consumption.</p> <p>National Technical Standards N. All new homes should comply with all relevant design and quality codes in the National Technical Standards. New homes designed specifically to accommodate the elderly should comply with optimal standard M4(3A) in accordance with policy H2.</p> <p>Climate Change R. Development proposals should consider measures to mitigate the effects of climate change by the incorporation of energy and water efficiency in new and existing buildings, 'grey' water and rainwater harvesting and storage for waste and recyclables. S. Adaptation to climate change should be achieved through the design and orientation of buildings to maximise solar gain, provide shelter from the elements and take advantage of natural light and ventilation."</p>	2032
ii) MEASURES THAT TAKE ADVANTAGE OF FINANCIAL ASSISTANCE AND OTHER BENEFITS OFFERED FROM CENTRAL GOVERNMENT INITIATIVES, TO HELP RESULT IN SIGNIFICANT ENERGY EFFICIENCY IMPROVEMENTS OF RESIDENTIAL ACCOMMODATION		
Cosy Homes in Lancashire - Securing Energy Company Obligation (ECO)	<p>The Cosy Homes in Lancashire (CHiL) scheme is a county wide collaboration which Fylde Council participated in during 2015-16.</p> <p>Its primary aim was to test the business model of installing energy efficiency and heating improvements in domestic dwellings through ECO funding and to achieve as many installations as possible to improve the thermal efficiency of Lancashire homes, especially for the benefit of customers experiencing fuel poverty and/or with cold-related health issues. The CHiL project gained an Ashden Award for Sustainable Homes in 2016 – see link below: http://www.ashden.org/files/case_studies/CHiL%20Ashden%20UK%202016%20case%20study_0.pdf</p>	2017 and ongoing

	<p>The Lancashire Energy Officers Group, under the CHiL banner, will continue to engage with BEIS, Ofgem and Fuel Utilities through the ECO2 transition period to secure as much flexible eligibility funding as possible for Lancashire households in fuel poverty or on a low income and are vulnerable with cold related illnesses. As a group of authorities we will also participate in further consultation on ECO3 following the progress of ECO2t transition and the lessons learned from this period, to help shape the ECO3 offer for vulnerable Lancashire residents.</p> <p>Fylde Council will continue to participate in the Lancashire Energy Officers Group and will review the opportunities for further ECO-related collaborative projects under the CHiL banner.</p>	
Heating Measures	<p>Lancashire Energy Officers Group (under the CHiL scheme) were successful in a £2,241,000 funding bid from the former Department of Energy and Climate Change (DECC) to install first time central heating to residential properties without it.</p> <p>The scheme has provided over 600 installations of gas central heating throughout Lancashire the majority (452) being delivered within Blackpool, Preston and Blackburn with Darwen councils.</p> <p>Fylde have publicised this scheme through our social media outlets, by a targeted leaflet drop using census data on central heating and by direct contact with residents and partner agencies.</p> <p>30 first time central heating installations have been provided in Fylde as a result which ranked Fylde 6th highest out of 14 authorities for the receipt of this grant funding.</p>	2016-17
ECO: Help to Heat Flexible Eligibility - Statement of Intent	<p>The Lancashire Energy Officers Group is preparing for ECO2t (transition period April 2017 – 2018) where local authorities will have discretion to identify fuel poor and vulnerable households (cold related illness) under the 'Flexible Eligibility' element of ECO Affordable Warmth.</p> <p>A Statement of Intent (SOI) will be developed during March 2017 in accordance with Ofgem requirements. At this early stage it is envisaged that criteria will be agreed Lancashire wide, but currently it is not confirmed whether the SOI will be a Lancashire consortium to cover all LA's or whether some LA's will develop their own SOI.</p> <p>Once developed, a link will be included in HECA reports as appropriate.</p>	2017 onwards
iii) LOCAL MEASURES TO REDUCE FUEL POVERTY AND RESULT IN SIGNIFICANT ENERGY EFFICIENCY IMPROVEMENTS OF RESIDENTIAL ACCOMMODATION		
Fuel Poverty / Affordable Warmth Interventions	<p>Since the end of the Warm Homes Health People funding in 2013 Lancashire County Council has provided funding to support district and city councils across Lancashire deliver affordable warmth interventions such as replacement boilers, heating system repairs, standard loft and cavity wall insulation and specialised insulation where traditional measures cannot be used. The funding is targeted at those at greatest risk of their health being affected by having a cold home. A further £1</p>	2016-17 and 2017-18

	<p>million was secured in 2016 to continue this support until 2018.</p> <p>In Fylde this is delivered under the Affordable Warmth Green Energy Grant. Fylde have been awarded £28,210 per year for two years to deliver affordable warmth measures and a boiler servicing scheme. This scheme is managed by the Housing Services section and runs in parallel to other sources of funding for example ECO.</p>	
Hospital In-Reach	<p>Over the last few years Lancashire councils have worked to increase efforts to reach the most in need by providing a hospital in-reach service. The main focus is to help those with long term health conditions, in particular the fuel poor, currently in hospital or recently discharged, return to safe and warm homes. Patients are signed up for interventions whilst in hospital or very soon after returning home, the wards targeted are respiratory, cancer, fracture clinics and those where there is a predominance of elderly patients who may need additional support when returning home.</p> <p>The project is currently being delivered through a combination of Council staff, Age Concern and Age UK Lancashire staff and volunteers at hospitals in Preston, Blackburn and Blackpool reaching residents from large parts of Lancashire.</p> <p>The priority during 2017 is to secure funding to sustain the service and expand the project into additional hospitals to reach more vulnerable households.</p>	Looking to develop further during 2017 & Ongoing
Awareness raising with frontline staff	Work is ongoing to raise awareness of the affordable warmth measures available across Lancashire and how to make referrals with frontline staff. Awareness sessions are targeted at those from health and social care services, ensuring the most vulnerable are targeted for interventions.	Ongoing
Staff Training	<p>The Energy Officers Group works with partners such as NEA to identify opportunities for staff training. In-house sessions have recently been provided on the dangers of Carbon Monoxide and fuel poverty; how to identify those at risk and make effective referrals. Opportunities for further training will be sought during 2017-18.</p> <p>Fylde Council Housing Services staff have attended these free training events.</p>	2016-17 and ongoing
Advice to the Public	<p>An energy advice booklet is being developed for Lancashire residents. It will provide information specific to Lancashire on where to get advice and support.</p> <p>Fylde council's website is currently in the process of being updated with an information page to all the available grants and advice which are available to members of the public. This should go live mid-2017.</p>	2017
Local advice provision / awareness e.g. through HIA's	<p>Fylde Council undertakes energy advice awareness through our housing advice service and our private sector enforcement programme.</p> <p>Fylde also work with several partner agencies on the promotion of energy advice such as CAB, Face to Face (YMCA) and third sector agencies for example Age Concern.</p> <p>Care and Repair (Fylde and Wyre) also provide local advice and awareness to members of the public</p>	Ongoing

	and act as a referral agency into schemes such as CHiL.	
Engaging with Clinical Commissioning Groups (CCGs)	The Lancashire Energy Officers Group is identifying opportunities to engage and work with the CCGs. A Lancashire specific event is planned for 2017.	2017
Fairer Power- 'Red Rose Energy'	Fylde Council has provisionally signed up to Fairer Power – Red Rose Energy, providing our residents access to a low price, competitive, fixed or variable tariff, including supply to pre-payment meter customers as an alternative to the 'big six' suppliers. As the lead authority, Preston City Council has entered into partnership arrangement with Fairerpower, established as a not for profit business by Cheshire East Council with Ovo Energy, to offer Lancashire households access to a fair and competitive domestic energy tariff. The arrangement is open to all Lancashire authorities to join to enable the offer to become available in their council area.	2017 & ongoing
Smart Meters	The Energy Officers Group has partnered with Smart Energy GB to support the smart meter roll out (2016-2020) and leaflets have been produced with the Lancashire 'Cosy Homes' branding. Initial training has already been provided to some local authority energy officers. Opportunities to provide training sessions for 'champions' and secure funding to support the roll out across Lancashire will be sought going forward.	2016-2020
Minimum standards in the private rented sector -	Fylde Borough Council housing section undertook 425 inspections in 2015/16 in relation to maintaining standards in the private rented sector. It has responded to 243 service requests in relation to defective properties. The Housing services team has recently completed a district wide survey of Houses in Multiple Occupation based from both current and historic records. It has identified 515 properties which have been converted to a combination of self-contained flats and sharing facilities. This survey will be the basis of our proactive inspection programme for 2016-17 and beyond. All visits undertaken by both our reactive and proactive inspection programmes include a survey of the heating systems and insulation measures within a dwelling. "Excess cold" is a hazard under the Housing Health and Safety Rating System (HHSRS) and is enforceable under part one of the Housing Act 2004. The Housing Act 2004 allows Fylde to require adequate heating and insulation measures within the private rented sector in order to reduce or eliminate the risk from cold. The council can take remedial action if the landlord is unwilling to improve the property. In addition we require all landlords to supply an Energy Performance Certificate (EPC) following a housing standards inspection. The EPC indicates how energy efficient a property is by rating the premises from A-G. Whilst we are not the enforcing authority we refer any properties without an EPC to Lancashire County Council Trading Standards team. As from the 1st April 2018 it is proposed that any properties rented within the private rented sector	Ongoing

	will have a minimum energy performance rating of E on an Energy EPC. The regulations will come into force for new lets and renewals of tenancies with effect from 1st April 2018 and for all existing tenancies on 1st April 2020. It will be unlawful to rent a property which breaches the requirement for a minimum E rating, unless there is an applicable exemption. A civil penalty of up to £4,000 will be imposed for breaches.	
Building Control	Fylde Council's building control section work to ensure compliance with Approved Document L of the Building Regulations 2010. This document is titled "Conservation of fuel and power in new dwellings". This document applies to both domestic and commercial premises. The building control section also offer free advice and guidance on how these regulations can be complied with.	Ongoing
Defective Insulation	Blackburn with Darwen Council commissioned a study into problem cavity wall insulation (CWI) because of increasing evidence of instances concerning damp, wet and saturated insulation, consequent mould, rat infestation and health related problems where CWI has been installed incorrectly or inappropriately. The results have been shared across the Lancashire Energy Officers Group and with government. An event is planned for 2017 to further raise awareness on insulation, damp and mould problems with local authorities and housing associations across Lancashire	2016-17 & ongoing
iii) MEASURES TO IMPLEMENT ENERGY EFFICIENCY IMPROVEMENTS COST-EFFECTIVELY IN RESIDENTIAL ACCOMMODATION BY USING AREA BASED/STREET ROLL OUT INVOLVING LOCAL COMMUNITIES AND PARTNERSHIPS		
Cosy Homes in Lancashire (CHIL)	Fylde alongside Lancashire District Council partners will remain vigilant for opportunities to access funding and develop coherent Affordable Warmth schemes. Examples are likely to include bidding for funding generated by Energy Companies' fines (the Voluntary Redress Payments), the ECO Flexible Eligibility initiatives, the Smart Energy GB (smart metering) and Warm Homes Discount, for example.	2017 and ongoing
Hard to Treat Homes	The Council notes the Government's response (January 2017) to the 'Help to Heat' consultation with regards to solid wall insulation. The Council will endeavour to facilitate opportunities for residents to access suitable funding.	2017 and ongoing
iv) TIMEFRAME FOR DELIVERY AND NATIONAL / LOCAL PARTNERS		
Timeframe	The timeframe for delivery is set out alongside the activities outlined above. Many are long-standing and ongoing actions reviewed on an ongoing basis to ensure all opportunities from government initiatives and other funding streams are realised.	
Lancashire Energy Officers Group	The Lancashire Energy Officers Group consists of representatives from the 12 district councils in Lancashire, Blackburn with Darwen Council, Blackpool Council and Lancashire County Council. The Group was established in 2007 and works in	

	partnership to improve the energy efficiency of Lancashire Homes, address health inequalities exacerbated by living in cold damp homes, reduce fuel poverty, tackle seasonal excess deaths and reduce carbon emissions from the domestic sector.
Cosy Homes In Lancashire (CHIL) – Network of delivery partners.	The Energy Officers Group works with a network of local installers and delivery partners to deliver local and regional energy efficiency schemes under the Lancashire 'CHIL' brand.
Fuel Utilities	The Energy Officers Group is in regular contact with a range of fuel utilities in order to secure ECO funding for Lancashire residents. This will continue to establish relationships to deliver ECO Flexible Eligibility in Lancashire.
Ashden Awards Alumni	The Cosy Homes in Lancashire project gained an Ashden Award for Sustainable Homes in 2016. As a winner the Energy Group has joined the Ashden Awards Alumni via Blackpool Council as the CHIL project lead. This provides the Lancashire councils access to a network of support to help expand out projects.
NW Association of Local Energy Officers (ALEO)	The Council links into the NW ALEO network to share knowledge on reducing domestic-sector carbon footprint and tackling fuel poverty across the region.
National Energy Action (NEA)	Representatives from the Energy Officers Group regularly attend the Northwest Fuel Poverty and Fuel Debt Forums to share best practice and learning across the regional network. The Group has worked with NEA to provide in-house training sessions on fuel poverty and how to identify those at risk and make effective referrals.
Smart Energy GB	The Lancashire Energy Officers Group has partnered with Smart Energy GB to support the smart meter roll out.
Community engagement	There is partnership engagement across Lancashire with other agencies including Lancashire Fire and Rescue, and Lancashire Constabulary and third sector organisations to promote and improve the wellbeing of our communities through early intervention and strong referral pathways.
Third Sector Organisations	Across Lancashire the Energy Officers Groups works with local organisations such as Age UK Lancashire and Age Concern to target affordable warmth interventions at vulnerable groups and to develop referral pathways.
Lancashire Combined Authority	The shadow Combined Authority for Lancashire is meeting on a monthly basis with a view to becoming formally established from April 2017. Leaders have already agreed a Scheme of Governance which sets out voting arrangements and membership and the shadow Combined Authority are operating within these same principles.

Signed off by	
Position	